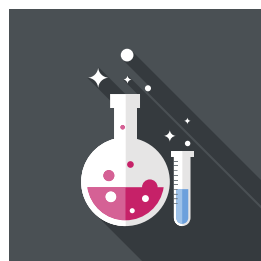
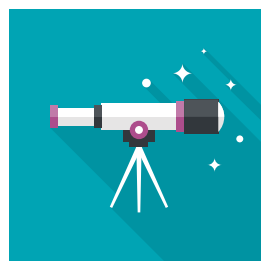
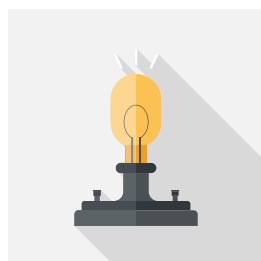
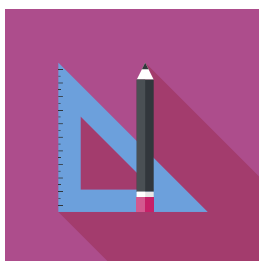
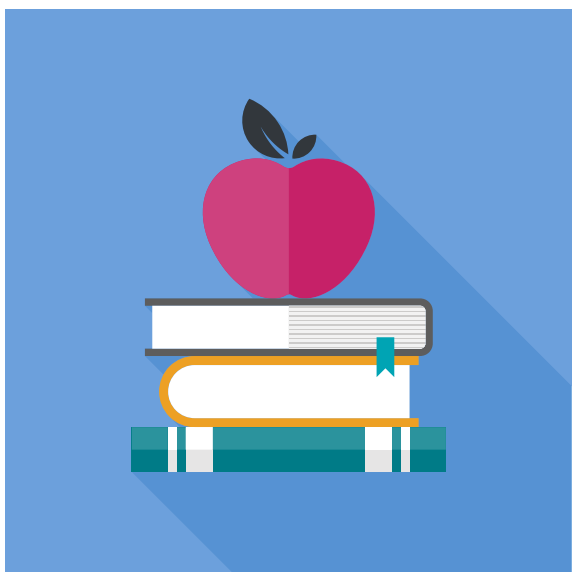
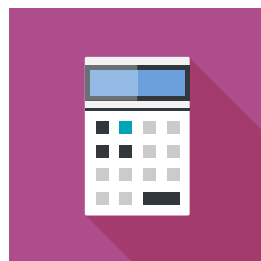
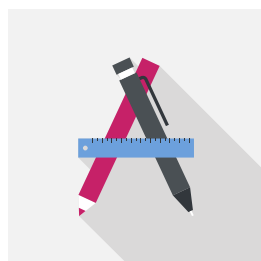
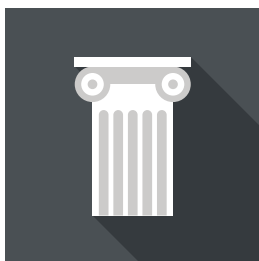
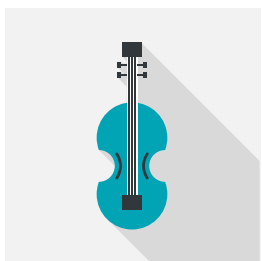
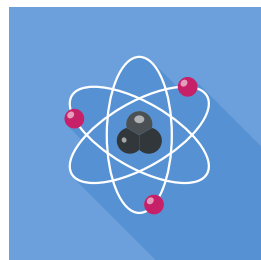


# ISTAR Annual Report



2016  
-  
2017



# CONTENTS

Message from Executive Director	1
Districtwide ISTAR Summary	2
Top Issues By School Type	3 - 4
Top Issues For Non-School Type; Top Issues By Location Occurred	5
A Closer Look: Cannabis	6
Summary of All Issues by Type	7 - 8

September 29, 2017

On any given school day, over 450, 000 K-12 students in Los Angeles are placed in the care of our teachers, administrators and support staff. When obstacles impede the processes that ensure safety at all levels, the Division of District Operations responds. Whether it is smoke from a brushfire, law enforcement activity, or a school bus accident, we respond.

The Incident System Tracking Accountability Report (iSTAR) is a system that facilitates our response, informs our practice, and assists in effective communication when incidents arise. In the 2016-2017 academic year, there was a ten percent increase in iSTAR reports and a seven percent increase in various issues from the prior year. Often times, the statistics are daunting and the incidents are alarming; however, the Division of District Operations works collaboratively with other Divisions to ensure a timely response, with support systems in place, to incidents Districtwide.

Darneika Watson-Davis, Ph.D.  
Executive Director  
Division of District Operations

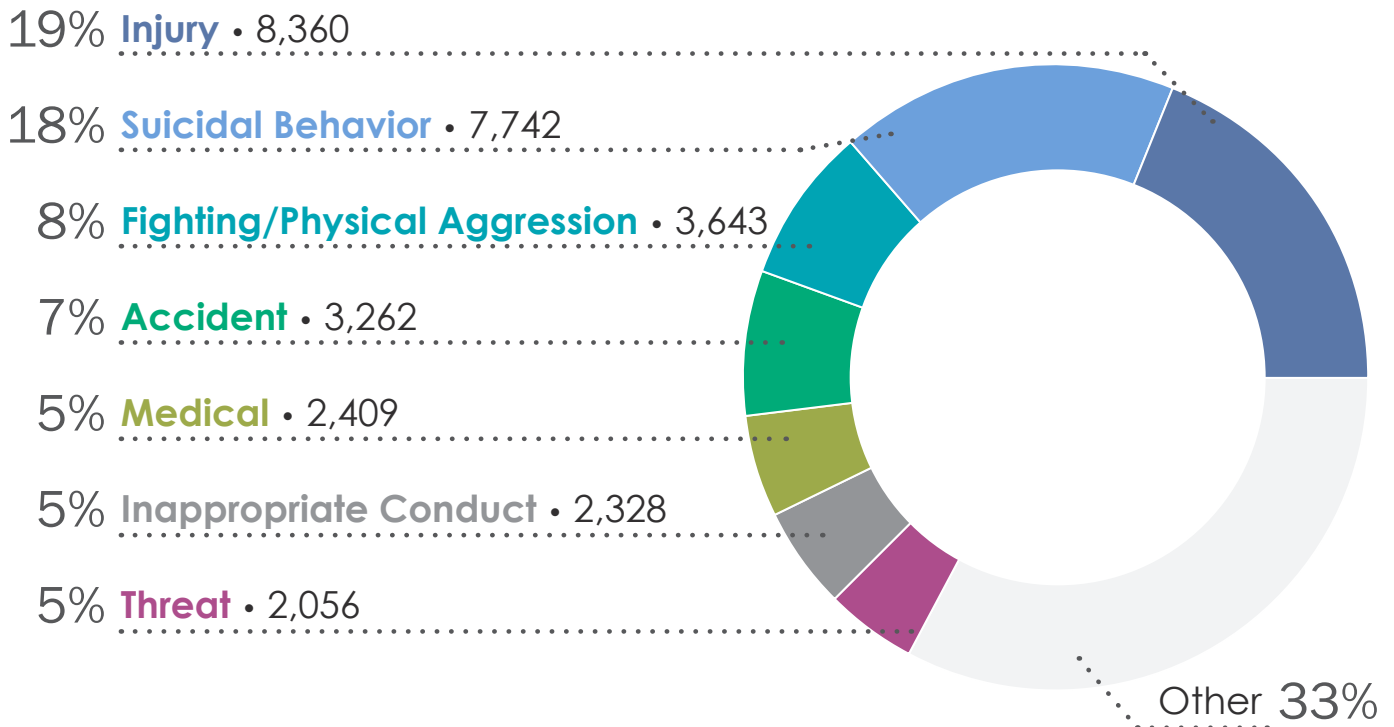
# REPORTS AND ISSUES BY DIVISION AND BOARD DISTRICT

	REPORTS	ISSUES
LD Central	6,732	7,958
LD East	5,884	6,668
LD Northeast	5,660	6,538
LD Northwest	4,733	5,361
LD South	5,878	6,896
LD West	7,365	8,742
Options	100	107
Adult Ed	193	199
Charter	62	73
Non-School	1,651	1,671
Districtwide	38,258	44,213

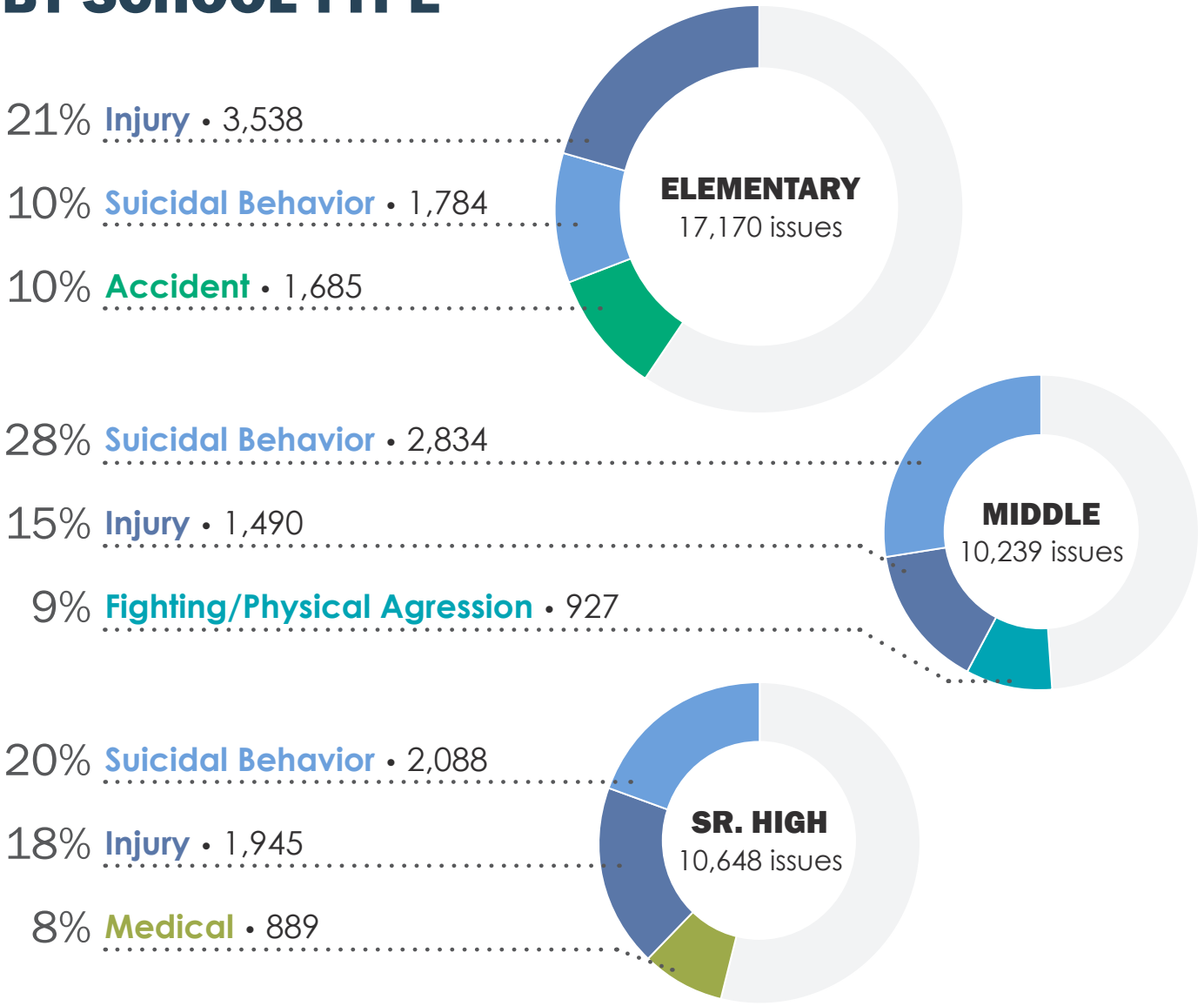
Bd. Dist.	REPORTS	ISSUES
One	5,742	6,766
Two	7,255	8,286
Three	4,684	5,301
Four	3,491	4,085
Five	5,367	6,106
Six	5,453	6,292
Seven	6,223	7,325

Note: Aggregate of numbers above do not match aggregate of those to the left as some locations are outside board district boundaries.

## TOP EIGHT ISSUES



# TOP THREE ISSUES BY SCHOOL TYPE

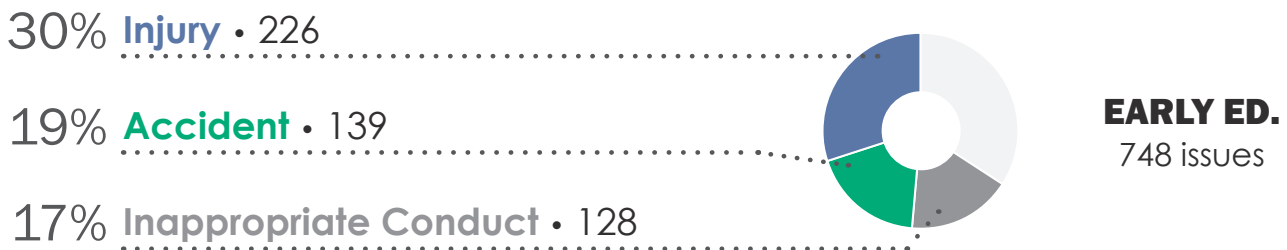
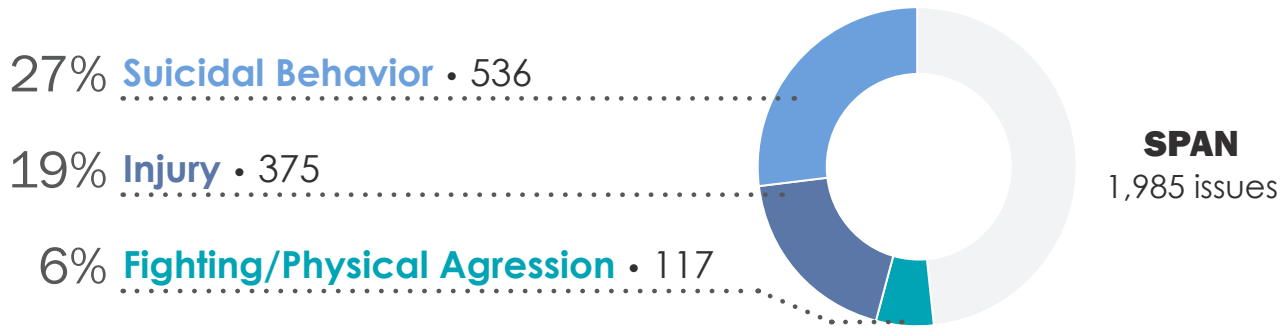


NOTE: Size of pie charts are relational to school types in demarcated group; gray denotes all other issue types.

<b>LAUSD SCHOOLS AND CENTERS</b>	Primary School Centers	19	Special Education Schools	13
	Elementary Schools	448	Home/Hospital	2
	Middle Schools	81	K-12 Magnet Centers	177
	Senior High Schools	94	Charter Schools	224
	Option Schools	54	Other Schools and Centers	120
	Magnet Schools	49	<b>Grand Total</b>	<b>1,306</b>
	Multi-level Schools	25		

Per LAUSD Fingertip Facts 2016-2017

# TOP THREE ISSUES BY SCHOOL TYPE



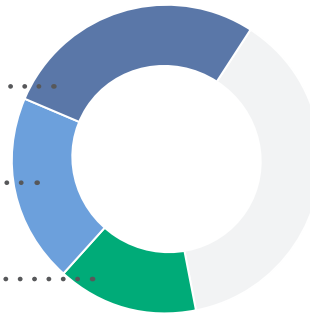
NOTE: Size of pie charts are relational to school types in demarcated group; gray denotes all other issue types.

# TOP THREE ISSUES FOR NON-SCHOOLS

28% **Injury** • 516

20% **Suicidal Behavior** • 368

15% **Accident** • 274



**NON-SCHOOL**  
1,855 issues

# TOP THREE ISSUES BY LOCATION

**DISTRICT OFFICE** | 234 issues

47% **Injury** • 109

20% **Accident** • 47

16% **Medical** • 37

**OFF CAMPUS** | 7,161 issues

24% **Suicidal Behavior** • 1,710

10% **Injury** • 721

7% **Trauma/Violence Exposure** • 471

**DISTRICT VEHICLE** | 1,013 issues

47% **Accident** • 478

16% **Injury** • 166

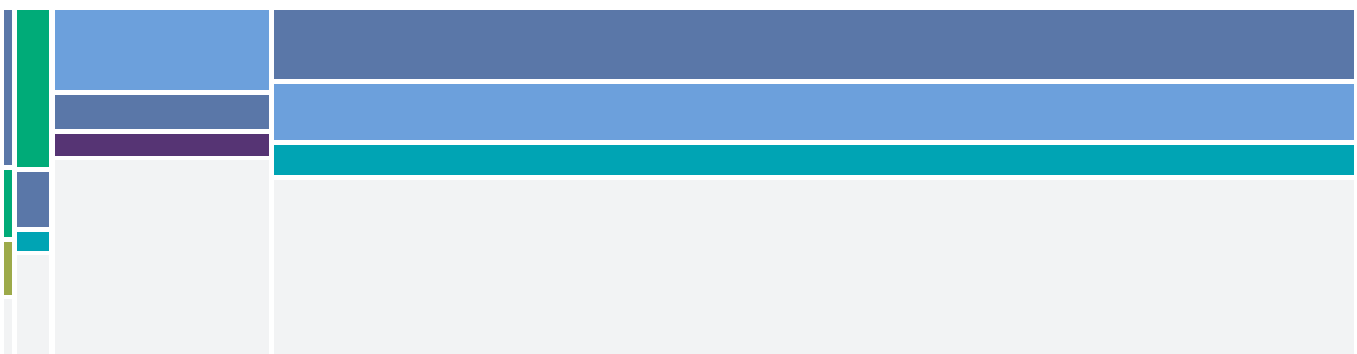
6% **Fighting/Physical Aggression** • 57

**ON CAMPUS** | 35,805 issues

21% **Injury** • 7,364

17% **Suicidal Behavior** • 6,016

9% **Fighting/Physical Aggression** • 3,196



NOTE: Volume of bar charts are relational to each other; gray denotes all other issue types.

To track where issues occur, ISTAR asks users to check one of five boxes:  
on campus, off campus, at another school, district office, district school bus/vehicle.

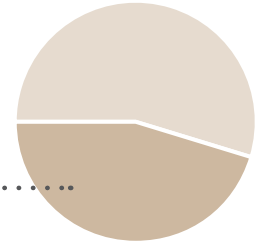
Note: "At another school" is grouped with "on campus."

# A CLOSER LOOK: CANNABIS

## SY 2014-2015

Illegal/Controlled Substance • 630

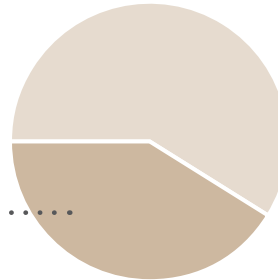
45% Marijuana • 286



## SY 2015-2016

Illegal/Controlled Substance • 840

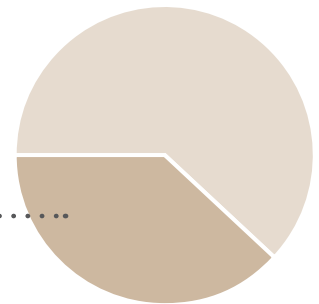
41% Marijuana • 346



## SY 2016-2017

Illegal/Controlled Substance • 969

38% Marijuana • 371



NOTE: Size of pie charts are relational; light tan denotes all other illegal/controlled substance sub-issue types.



The passage of Proposition 64 on November 8, 2016 legalized the possession and use of cannabis (marijuana, weed, pot) by adults over the age of 21 in California. Individuals under age 21 caught with the drug without a medical prescription will be required to complete drug education or counseling and community service.

Children and teenagers are not miniature adults.

Did you know?

- The rational part of a teen's brain, the prefrontal cortex, isn't fully developed and won't be until age 25; regular cannabis use during these years may lead to physical changes in the brain.
- Regular cannabis use has been linked to anxiety, depression, and suicide.

Note: Facts provided by the California Department of Public Health.

For more information, visit "Let's Talk Cannabis." <http://bit.do/letstalkcannabis>



## SUMMARY OF ALL ISSUES BY TYPE

Issue Type	Count 2016-17	Count 2015-16	Change [yr over yr]
Abduction	47	56	(9)
Accident	3,262	3,323	(61)
Air Conditioning Problem	54	133	(79)
Alarm Activation Investigation	73	185	(112)
Altercation, Verbal	593	627	(34)
Arrest	330	370	(40)
Bells Out of Order	6	14	(8)
Bullying	1,061	965	96
Burglary	315	324	(9)
Child Annoyance	676	608	68
Custody Issue	154	136	18
Damaged/Attempted to Damaged School or Private Property	658	642	16
Death	120	107	13
Discrimination/Harassment	664	607	57
Disrupted School-Wide Activities	543	686	(143)
Disruptive Parent/Community Member/3rd Party	425	327	98
Environmental Hazard/Odor	182	145	37
Fighting/Physical Aggression	3,643	3,768	(125)
Fire	113	102	11
Fire Alarm System	95	90	5
Fire Sprinkler Broken	15	11	4
Fraud Allegation	13	26	(13)
Gas Leak/Odor	28	49	(21)
Hate Violence	24	19	5
Hazing	4	3	1
Heating System Problem	14	16	(2)
Illegal/Controlled Substance	1,153	1,014	139
Inappropriate Conduct	2,328	2,310	18

<b>Issue Type</b>	<b>Count 2016-17</b>	<b>Count 2015-16</b>	<b>Change [yr over yr]</b>
Injury	8,360	7,842	518
Intergroup Conflict	38	37	1
Law Enforcement Activity *	107		
Lockdown	328	371	(43)
Loitering	102	112	(10)
Lost School Keys	246	224	22
Medical	2,409	2,243	166
Missing/Runaway	673	602	71
Public Shelter	3	0	3
Robbery	180	174	6
Rodent/Insect Problems	46	30	16
Sewer Problem	77	65	12
Sex Crime/Sexual Behavior, Inappropriate	1,711	1,684	27
Shelter in Place	22	25	(3)
Shooting	61	57	4
Suicidal Behavior	7,742	5,624	2,118
Technology Failure	44	81	(37)
Testing	16	6	10
Theft	465	525	(60)
Threat	2,056	1,864	192
Trauma/Violence Exposure	738	629	109
Trespass	356	375	(19)
Unsecured Access to School Site	88	196	(108)
Utility Failure	290	289	1
Vandalism/Property Damage	323	427	(104)
Walkout/Demonstration	104	14	90
Weapons	1,035	982	53
<b>Total</b>	<b>44,213</b>	<b>41,141</b>	<b>3,072</b>

\* Issue type is no longer used in 2014/15 fiscal year.

The Incident System Tracking Accountability Report or ISTAR system was developed in 2010 to electronically capture incidents that affect the Los Angeles Unified School District, its students, employees and surrounding communities.

The mission of the Division of District Operations is to ensure that every LAUSD site receives support and guidance for creating and maintaining a safe and caring environment that supports learning and achievement.

Division of District Operations

Website: <http://schooloperations.lausd.net>

Telephone: (213) 241-5337

Facsimile: (213) 241-8950

All information and statistics contained within this report were derived from data recorded in the system.

Statistics published in the annual report include only incidents reported in the ISTAR system unless otherwise noted. Information does not include reports collected by other LAUSD agencies (e.g., Los Angeles School Police). Incidents may be unreported or erroneously reported in the ISTAR system.

