



Los Angeles Unified School District

Information Technology Division

IT Infrastructure Project Management Office

Apple iOS/iPad Wireless LAN Client Configuration

1. Tap on "Settings":



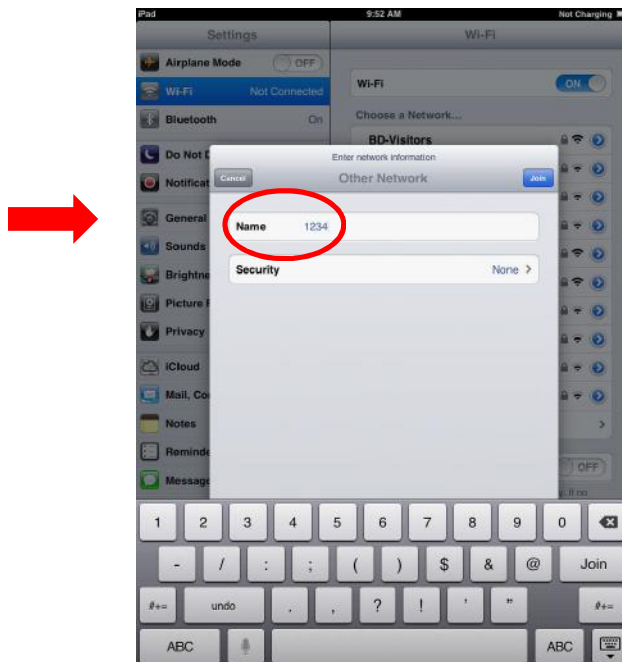
2. Tap on "Wi-Fi":



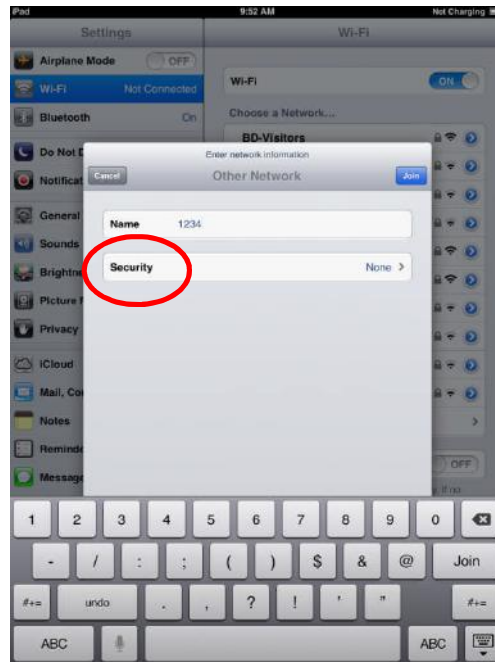
3. Tap on “Other...”



4. Enter the “Name” (SSID) provided by ITD (e.g. 1234):

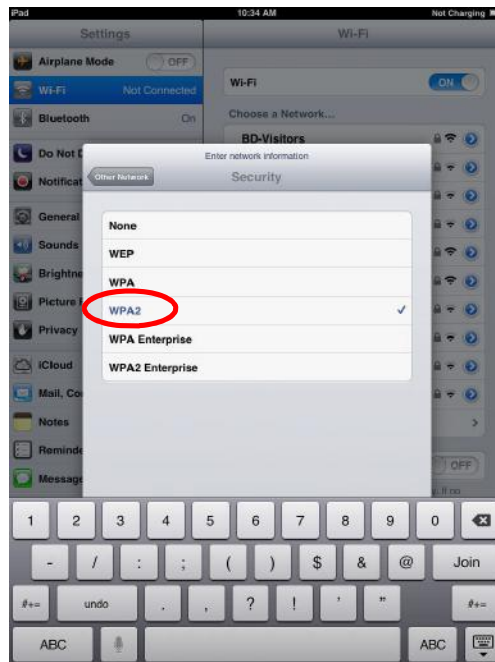


5. Tap on “Security”:

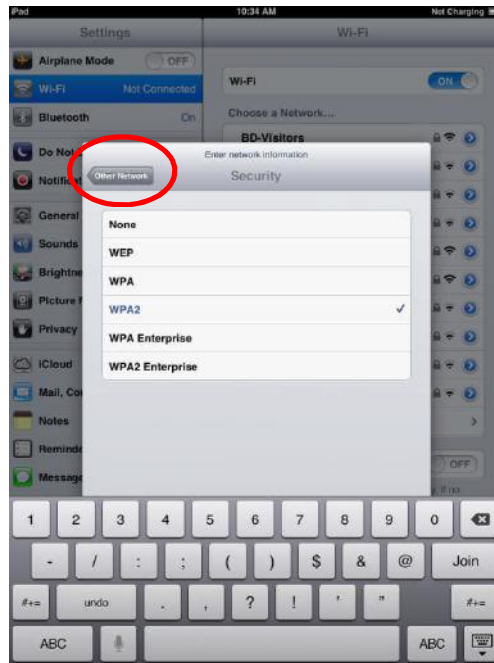


6. Tap on “WPA2”:

Note: If security type is not WPA2, select the proper security type provided by ITD.



7. Tap on “Other Network”:

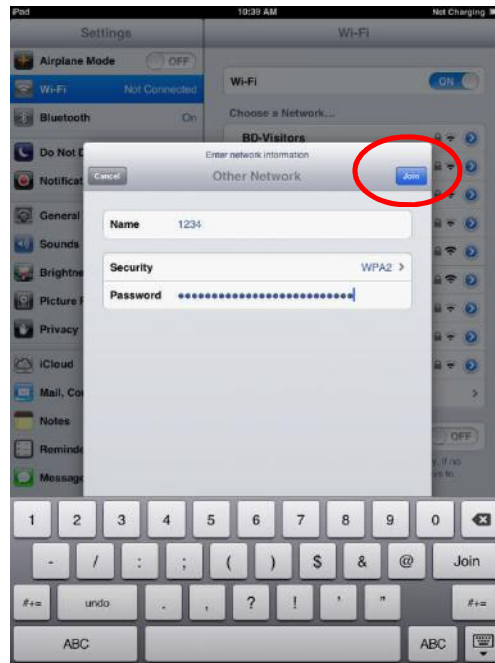


8. Enter the “Password” provided by ITD:

Note: Password is case sensitive.



9. Tap on “Join”



10. Verify that there is a check mark “✓” next to the network that you just added:



11. Return to the Home screen by pressing the “Home” button:



12. Test wireless network connectivity by browsing the Internet.

NOTE: DO NOT Distribute the Wireless Network information (SSID, PSK, or WEP key) to unauthorized personnel.

Adan A. Tzunun

Network Engineer

ITD – Design and Quality Assurance

Los Angeles Unified School District