



Los Angeles Unified School District
Student Health & Human Services

Resource and Information Guide for Students and Families



APPENDIX

District-Wide _____	p.2
Local District Central _____	p.4
Local District East _____	p.16
Local District Northeast _____	p.24
Local District Northwest _____	p.30
Local District South _____	p.34
Local District West _____	p.40
Other _____	p.47

INTRODUCTION

The toolkit is designed to provide information and resources for Students and Families enrolling and currently enrolled within the LAUSD. This information can also be used to support other student populations (such as foster care youth, homeless youth) in the District.

Disclaimer:

“District personnel cannot give legal advice concerning specific immigration matters. However, it is the District’s opinion that licensed immigration attorneys are the most likely to provide reliable legal advice on immigration matters. For your protection, the District does not recommend seeking legal advice from non-attorney “notarios.” The organizations listed in this toolkit work with communities and families in need of legal advice and other services. Also, a directory of free or low-cost nonprofit immigration legal services providers can be found at <https://www.immigrationlawhelp.org>. Please note that the advice provided by these organizations and lawyers on this website do not necessarily reflect the opinions of the District.”

LOCAL DISTRICT OFFICES

If you have questions about your school and to identify your neighborhood school, please contact your Local District (LD) office. Each LD office provides direct support to all District schools in the areas of instruction, parent engagement, school-wide positive behavior support, attendance, school safety and many other areas.

LD Northwest
6621 Balboa Blvd.,
Lake Balboa, CA 91406
(818) 654-3600

Instruction
Joseph Nacorda
Interim LD
Superintendent
(818) 654-3600

Operations
Debra Bryant
Administrator of
Operations
(818) 654-3670

**Parent and
Community
Engagement (PACE)**
Gonsalo Garay
Administrator of PACE
(818) 654-3600

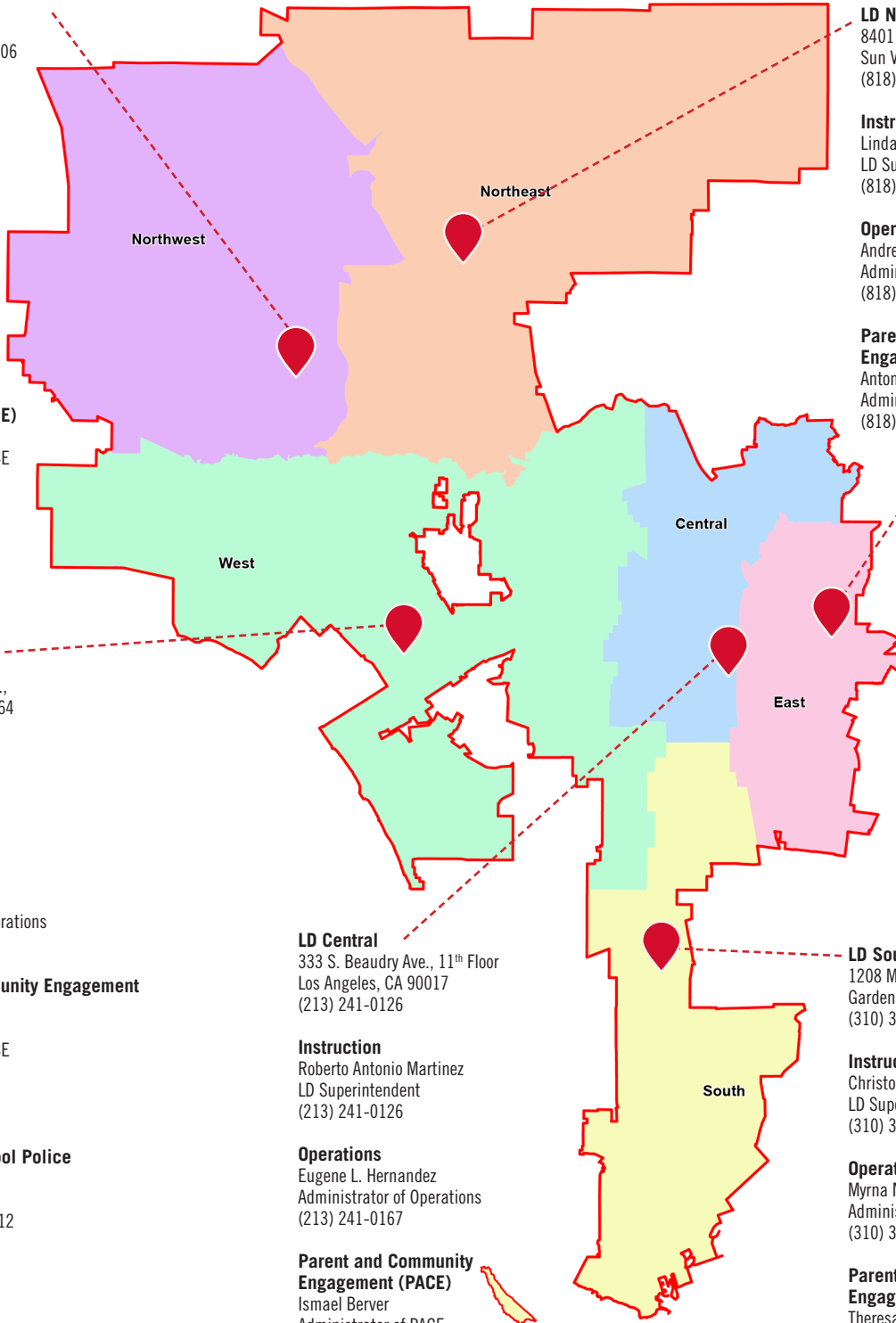
LD West
11380 W. Graham Pl.,
Los Angeles, CA 90064
(310) 914-2100

Instruction
Cheryl P. Hildreth
LD Superintendent
(310) 914-2100

Operations
Ra'Daniel McCoy
Administrator of Operations
(310) 914-2102

**Parent and Community Engagement
(PACE)**
Traci Calhoun
Administrator of PACE
(310) 914-2100

**Los Angeles School Police
Department**
125 N. Beaudry Ave.,
Los Angeles, CA 90012
(213)625-6631



LD Northeast
8401 Arleta Ave.,
Sun Valley, CA 91352
(818) 252-5400

Instruction
Linda del Cueto
LD Superintendent
(818) 252-5400

Operations
Andres Chait
Administrator of Operations
(818) 252-5400

**Parent and Community
Engagement (PACE)**
Antonio Reveles
Administrator of PACE
(818) 252-5400

LD East
2151 N. Soto St.,
Los Angeles, CA 90032
(323) 224-3100

Instruction
Jose P. Huerta
LD Superintendent
(323) 224-3100

Operations
Alfonzo C. Webb, II, Ed.D.
Administrator of
Operations
(323) 224-3177

**Parent and Community
Engagement (PACE)**
Jose Avila
Administrator of PACE
(323) 224-3100

LD Central
333 S. Beaudry Ave., 11th Floor
Los Angeles, CA 90017
(213) 241-0126

Instruction
Roberto Antonio Martinez
LD Superintendent
(213) 241-0126

Operations
Eugene L. Hernandez
Administrator of Operations
(213) 241-0167

**Parent and Community
Engagement (PACE)**
Ismael Berver
Administrator of PACE
(213) 241-0126

LD South
1208 Magnolia Ave.,
Gardena, CA 90247
(310) 354-3400

Instruction
Christopher Downing
LD Superintendent
(310) 354-3400

Operations
Myrna N. Brutti
Administrator of Operations
(310) 354-3515

**Parent and Community
Engagement (PACE)**
Theresa Arreguin
Administrator of PACE
(310) 354-3400

DISTRICT-WIDE

BEYOND THE BELL

Beyond the Bell Branch Central Office
333 S. Beaudry Ave., Fl. 29, Los Angeles, CA 90017
Phone: (213) 241-7900
Fax: (213) 241-7562
Website: <http://btb.lausd.net/>

Hours of Operation: Monday - Friday
8:00 P.M.-5:00 P.M.
Ages Served: K-12
Languages: English and Spanish
Type of Service: Education

Type of Service:

The mission of the Beyond the Bell Branch is to ensure that all children and youth in LAUSD have access to high quality, safe, and supervised academic, enrichment, and recreation programs that inspire learning and achievement beyond the regular school day (before and after school and Saturdays).

Additional Information:

After School Education & Safety (ASES), 21st Century Community Learning Center (CCLC), Ready, Set, Go!, Youth Services, Outdoor and Environmental Education, Music and Entertainment Education programs provide a safe place for students to go after school, as well as opportunities for education and enrichment. The three components of the programs include:

1. Academic Tutorial Program: Students study subjects such as Reading, Math, Writing, Science, Social Studies, and Computers. In addition, high school ASSETS Programs focus on college preparation and job readiness.
2. Recreational Program: Students participate in physical activities including Intramural Sports, Structured Physical Activity, Dance, and Aerobics.
3. Enrichment Program: Students participate in classes such as Life Skills, Art, Cooking, and Music.

DISTRICT-WIDE

OPERATION SCHOOL BELL & OPERATION SCHOOL BELL ON WHEELS, SERVICES OF THE ASSISTANCE LEAGUE OF LOS ANGELES

826 Cole Ave., Los Angeles, CA 90038

Contact Person: Kathy Balzer or Adrienne Seltzer

Phone: (323) 469-6017

Website: www.operationschoolbell.org

Hours of Operation: Monday - Friday

8:00 P.M.-3:30 P.M.

Ages Served: K-5th Grade

Languages: English

Type of Service: Basic Need

Type of Service:

The mission of the Beyond the Bell Branch is to ensure that all children and youth in LAUSD Operation School Bell, a volunteer service, provides new school uniforms, shoes, socks, underwear, jackets and backpacks for at-risk students in LAUSD grades K-5. Our mission is to help improve school attendance, self-esteem and academic success, by supplying needed clothing and supplies to children who otherwise would not have access to these basic items. Consistent school attendance is one of the best ways to help students succeed and reduce the cycle of poverty.

Additional Information:

We offer two venues for our service: our “shop” on Cole Ave. and our traveling 48-foot long trailer “Wheels”. Our Shop is open September - mid May and appointments can be made by calling our phone number listed below. Children must be referred by LAUSD staff and accompanied by LAUSD staff. Our Wheels trailer visits each local district at least twice a year and appointments are scheduled by each district’s area Facilitator.

L.D. CENTRAL-ORGANIZATION RESOURCES

ALL PEOPLES COMMUNITY CENTER

(FREE LEGAL SERVICES AT FAMILY SOURCE CENTER)

822 E. 20th St., Los Angeles, CA 90011

Service Area: Local District Central

Contact Person: Leticia Ortiz-Gonzales

Phone: (213) 747-6357 Ext.21

Fax: (213) 481-1023

Email: lortiz@allpeoplescc.org

Hours of Operation: Tuesday

2:00 P.M.-6:00 P.M.

Ages Served: 7-17

Languages: English and Spanish

Type of Service: Legal

Type of Service:

CARECEN is offering free legal services in various family source center locations throughout the city of Los Angeles. To be eligible for a free legal consultation, please call one of the following family source centers to start the enrollment process and to obtain more information about eligibility for the program. To enroll, you will need to show proof that you live in the city of Los Angeles, show proof of income and proof of identity.

Some of the services that we are offering at these sites include DACA applications (initial and renewals), Green card renewals, naturalization/citizenship applications and more. Additionally, these family source centers offer a variety of services & programs for parents & youth at no cost.

Additional Information:

Call to enroll & make an appointment. Additional services also offered on different days.

AMANECER COMMUNITY COUNSELING SERVICE

1200 Wilshire Blvd., #200, Los Angeles, CA 90017

Service Area: Local District Central

Contact Person: Laura Gonzalez-Rivera

Phone: (213) 482-9400

Fax: (213) 481-1023

Website: www.bettzedek.org

Email: helpingAmanecer@AmanecerLA.org

Hours of Operation:

Children's Program: 8:00 A.M.-7:30 P.M.

Adult Program: 8:00 A.M-5:30 P.M

Administration: 9:00 A.M-5:00 P.M

Ages Served: Birth-60+

Languages: English and Spanish

Type of Service: Mental Health

Type of Service:

We serve children, teens and adults challenged by mental illness including victims of domestic violence and foster youth and their families. Evidence-based, trauma-informed, prevention and crisis intervention therapeutic services, family therapy, group therapy, parenting groups, case management, school based, Birth to 5 program, crisis intervention and medication support.

Additional Information:

Walk in OD desk (officer of the day), OD calls and intake appointments.

L.D. CENTRAL-ORGANIZATION RESOURCES

BET TZEDEK LEGAL SERVICES

3250 Wilshire Blvd., Los Angeles, CA 90010

Service Area: Local District Central

Contact Person: Liz Gonzalez

Phone: (323) 549-5825

Website: www.bettzedek.org

Email: lgonzalez@bettzedek.org

Hours of Operation:

Monday – Friday 9:00 A.M.-5:00 P.M

Ages Served: Birth-60+

Languages: Spanish

Type of Service: Legal

Type of Service:

Direct representation on Probate Guardianship and request for Special Immigrant Juvenile Status findings and orders through Probate Guardianship proceedings. All services provided free of charge to qualifying individuals.

Additional Information:

Appointments should be made with contact persons noted below.

BRESEE FOUNDATION

(FREE LEGAL SERVICES AT FAMILY SOURCE CENTER)

184 S. Bimini Pl., Los Angeles, CA 90004

Service Area: Local District Central

Contact Person: Cinthia Ext. 160, Rosa Ext. 118, Lizeth Ext. 116

Phone: (213) 387-2822

Hours of Operation: Friday

9:00 A.M.-1:00 P.M.

Languages: English and Spanish

Type of Service: Legal

Type of Service:

CARECEN is offering free legal services in various family source center locations throughout the city of Los Angeles. To be eligible for a free legal consultation, please call one of the following family source centers to start the enrollment process and to obtain more information about eligibility for the program. To enroll, you will need to show proof that you live in the city of Los Angeles, show proof of income and proof of identity.

Some of the services that we are offering at these sites include DACA applications (initial and renewals), Green card renewals, naturalization/citizenship applications and more. Additionally, these family source centers offer a variety of services & programs for parents & youth at no cost.

Additional Information:

Call to enroll & make an appointment. Additional services also offered on different days.

L.D. CENTRAL-ORGANIZATION RESOURCES

CARECEN DAY LABOR CENTER

1675 Wilshire Blvd., Los Angeles, CA 90017

Service Area: Local District Central

Phone: (213) 483-0136

Website: <http://www.carecen-la.org>
<http://espanol.carecen-la.org/>

Hours of Operation: Monday
6:30 A.M.-2:00 P.M.

Languages: Spanish, English,
Central American

Type of Service: Legal

Type of Service:

The CARECEN Day Labor Job Center connects small businesses and homeowners with skilled day laborers for a variety of services, ensuring fair wages and good working conditions. Our workers are comprised of hard working men and women who are dedicated both to supporting their families and to being active contributors to life in our community. We do NOT charge an agency fee.

Services provided to Workers & the Community:

- Weekly English and Computer literacy classes
- Health and legal referrals
- Wage theft consultation and referrals
- Worker Right workshops
- Monthly health screenings conducted by medical partnerships

Additional Information for Employers:

We organize and normalize the hiring of day laborers, monitor worker quality and provide opportunities for worker incorporation into the mainstream economy through employment assistance and, sometimes, skills training.

Additional Information for Day Laborers:

We monitor the actions of employers, increase the transparency of the hiring process and provide an institutional foundation for holding employers accountable for workplace abuses.

L.D. CENTRAL-ORGANIZATION RESOURCES

CENTRAL AMERICAN RESOURCE CENTER (CARECEN)

2845 W. Seventh St., Los Angeles, CA 90005

Service Area: Local District Central

Phone: (213) 385-1094

Website: <http://www.carecen-la.org>
<http://espanol.carecen-la.org/>

Hours of Operation: Monday

9:00 A.M.-4:00 P.M.

Languages: Spanish, English,
Central American

Type of Service: Legal

Type of Service:

We provide immigration legal services, listed below, at low or no cost. These services are also available at Family Source Centers throughout Los Angeles. CARECEN provides education, enrichment and leadership development programs for children, youth and adults through its Parent Center, Youth Center and citizenship classes. All programs are at no or low cost to the community. Our Day Laborer Center provides a humane way to look for work and offers English courses as well as information about labor, health and safety laws. There are no agency fees. We are involved in several coalitions that seek policy changes around immigration, education reform and workers' rights.

Additional Information:

Consult fee-\$25, except for U-Visa, VAWA, DACA, Naturalization/Citizenship. Los Angeles Headquarters walk-ins on Wednesday 9:00 A.M.-4:00 P.M. San Fernando Valley office walk-ins on Mondays 9:00 A.M.- 4:00 P.M.

L.D. CENTRAL-ORGANIZATION RESOURCES

CENTRAL CITY NEIGHBORHOOD PARTNERS

(FREE LEGAL SERVICES AT FAMILY SOURCE CENTER)

501 S. Bixel St., Los Angeles, CA 90017

Service Area: Local District Central

Phone: (213) 482-8618

Hours of Operation: Monday

1:00 P.M.-5:00 P.M.

Languages: English and Spanish

Type of Service: Legal

Type of Service:

CARECEN is offering free legal services in various family source center locations throughout the city of Los Angeles. To be eligible for a free legal consultation, please call one of the following family source centers to start the enrollment process and to obtain more information about eligibility for the program. To enroll, you will need to show proof that you live in the city of Los Angeles, show proof of income and proof of identity.

Some of the services that we are offering at these sites include DACA applications (initial and renewals), Green card renewals, naturalization/citizenship applications and more. Additionally, these family source centers offer a variety of services & programs for parents & youth at no cost.

Additional Information:

Call to enroll & make an appointment. Additional services also offered on different days.

L.D. CENTRAL-ORGANIZATION RESOURCES

CONSULATE GENERAL OF MEXICO IN LOS ANGELES

2401 W. 6th St., Los Angeles CA, 90057

Service Area: Local District Central

Contact Person: Felipe Carrera, Salomé Ruíz, Dulce Flores

Phone: (213) 368-2732

(213) 368-2729

(213) 368-2731

Hours of Operation:

8:00 A.M.-1:00 P.M.

Ages Served: All ages

Languages: Spanish primary and

English as secondary

Type of Service: Multiple Services

Website: <https://consulmex2.sre.gob.mx/losangeles/>

Email: fcarrera@sre.gob.mx ; sruiz@sre.gob.mx; proteccionconlan3@sre.gob.mx

Type of Service:

The Department of Protection provides the following services to Mexican Nationals:

- Free legal consultation for the following type of cases: Immigration, Civil, Family, Criminal and Labor Law
- Free access to a Meditation Group for women that are survivors of Domestic Violence
- Free access to a Support Group for women that are survivors of Domestic Violence
- Free access to Parenting classes
- Free access to request the location of family members lost at the border
- Free access to resources like shelters, mental health, low cost medical services, etc.

Additional Information:

Walk in, no appointment needed. The meditation group for women is held every Tuesday from 4:00 P.M.-5:00 P.M. and support group and parenting classes are held every Tuesday from 5:00 P.M.-7:00 P.M.

L.D. CENTRAL-ORGANIZATION RESOURCES

IMMIGRANT DEFENDERS LAW CENTER

634 S. Spring St., 10th Fl., Los Angeles, CA 90014

Service Area: Local District Central

Phone: (213) 634-0999

Fax: (213) 282-3133

Website: www.ImmDef.org

Hours of Operation: Monday - Friday
9:00 A.M.-5:00 P.M.

Ages Served: No age limit, as long as there is a UAC designation by ORR

Languages: English and Spanish

Type of Service: Legal

Type of Service:

Legal representation of minors who have been designated as Unaccompanied Alien Children (UAC) by the Office of Refugee Resettlement (ORR) who are in active removal proceedings.

Additional Information:

No walk in appointments. A potential client should call the main telephone line during office hours to set up an appointment. Appointments will only be set if there is any capacity left for each month. The best time to call is the last week of each month.

IMMIGRATION COURT HELP-DESK

606 S. Olive St., Los Angeles, CA 90014

Note: ICH is located on the 5th Fl.

of the Los Angeles Immigration Court

Hours of Operation:

Tuesday and Thursdays

9:30 A.M.-12:00 P.M.

& 1:30 P.M.-4:00 P.M.

Type of Service:

The Immigration Court Help-Desk (ICH) is a program offered by Esperanza to provide you with information relevant to your immigration case. Esperanza cannot represent you in court.

Additional Information:

Services provided in all languages:

Individual Information Sessions

Self Help Workshops

Pro Bono Outreach

Group Information Sessions

L.D. CENTRAL-ORGANIZATION RESOURCES

INTERNATIONAL RESCUE COMMITTEE

625 N. Maryland Ave., Glendale, CA 91206

Service Area: Local District Central

Contact Person: Martin Zogg

Phone: (818) 937-2860

Fax: (818) 550-6277

Website: rescue.org

Email: martin.zogg@rescue.org

Hours of Operation: 9:00 A.M.- 6:00 P.M.

Ages Served: No limitation

Languages: Armenian, Farsi, Arabic, Spanish, Tagalog, Bosnian and Serbian

Type of Service: Immigration Services

Type of Service:

Resettlement of Refugees, asylees, CAM AOR, citizenship and financial literacy classes and immigration services.

Additional Information:

Walk in: Weekdays 9:00 A.M.-6:00 P.M. except Wednesdays 9:00 A.M.-12:00 P.M.

Appointments: For new R&P cases and immigration.

Workshops: IRC holds immigration workshops once a month, cultural orientations only for refugees

Classes: Free citizenship classes in IRC/LA, free citizenship and financial literacy classes in Library connection @Adams square, Eagle Rock Branch Library, Benjamin Franklin Library, Central Library-Singleton Adult Literacy Center, Felipe De Neve Branch Library, Pico Union Branch Library, Wilshire Branch Library, Alma Reeves-Watts Branch Library, Harbor Gateway-Harbor City, Panorama City Branch Library and Pacoima Branch Library.

L.D. CENTRAL-ORGANIZATION RESOURCES

KIDS IN NEED OF DEFENSE (KIND)

350 S. Grand Ave., 32nd Fl., Los Angeles, CA 90071

Service Area: Local District Central

Contact Person: Jessica Corona

Phone: (213) 892-2043

Fax: (213) 892-2054

Website: SupportKind.org

Email: JCorona@supportkind.org

Hours of Operation: Monday - Friday

9:00 A.M.-5:00 P.M.

Ages Served: 0-18

Languages: English and Spanish

Type of Service: Legal

Type of Service:

KIND serves as the leading organization for the protection of children who enter the U.S. immigration system alone and strives to ensure that no such child appears in immigration court without representation. We achieve fundamental fairness through high-quality legal representation and by advancing the child's best interests, safety, and well-being.

Additional Information:

Meetings and interviews by appointment only. KIND serves unaccompanied minors who have entered the United States before the age of 18.

LEGAL AID FOUNDATION OF LOS ANGELES

5228 Whittier Blvd., Los Angeles, CA 90022

Service Area: Local District Central

Contact Person: First available screener

Phone: (800) 399-4529

Website: www.lafla.org

Hours of Operation: 9:00 A.M.-5:00 P.M.

(Self-Help Center hours vary)

Ages Served: All Ages

Type of Service: Legal and Multiple Services

Type of Service:

We provide civil legal aid, meaning direct representation in court on civil matters especially with regard to housing and evictions, government benefits and domestic violence/family law. We also offer community education, usually in the form of know your rights workshops and legal clinics.

Additional Information:

Clients must be low-income to qualify for our services (see income table here <https://lafla.org/help/qualify/>).

At our Self-Help Centers (in four courthouses) litigants do not need to qualify income-wise.

We have a number of legal clinics and information sessions that can be found here:

<https://lafla.org/self-help/calendar/>

L.D. CENTRAL-ORGANIZATION RESOURCES

LOYOLA IMMIGRANT JUSTICE CLINIC

919 Albany St., Los Angeles, CA 90015

Service Area: Local District Central

Contact Person: Emily Robinson, Sandra Ruiz,
and Alejandro Barajas

Phone: (213) 252-7409

Fax: (213) 252-7444

Website: <http://www.lls.edu/academics/clinicexperientiallearning/loyolaimmigrantjusticeclinic/>

Hours of Operation: 9:00 A.M.-5:00 P.M.

Ages Served: All Ages

Languages: Spanish and English (As an academic institution we can contact Loyola Marymount University and students at Loyola Law School should other languages be necessary)

Type of Service: Legal

Type of Service:

LIJC is a community based collaboration of Loyola Law School, Homeboy Industries and Dolores Mission Parish with the following mission: to advance the rights of the indigent immigrant population residing on the East Side of Los Angeles through direct legal services, education and community empowerment. LIJC was founded in August of 2012 and has partnered with Homeboy and Dolores Mission since its inception in order to nurture an identity within vulnerable immigrant communities as a resource for reliable, accessible, high-quality legal services. Unlike other legal aid organizations who require clients to come to them, LIJC enters into the communities it targets and brings its services to the clients building trust and motivating clients to seek out its services. At its free, twice weekly immigration consultation sessions (held at its partner locations) LIJC reaches about 75 potential clients each week.

Additional Information:

Free Weekly Consultations:

Each Wednesday from 2:30 P.M. to 5:00 P.M. at Dolores Mission
171 S. Gless St., Los Angeles, CA 90033

Each Friday from 2:00 P.M. to 5:00 P.M. at Homeboy Industries
130 Bruno Street, Los Angeles, CA 90012

(For appointments call (323) 526-1254 Ext. 325/ Walk-ins Accepted)

L.D. CENTRAL-ORGANIZATION RESOURCES

MIGUEL CONTRERAS FOUNDATION

2130 W. James M. Wood Blvd., Los Angeles, CA 90006

Service Area: Local District Central

Contact Person: Diego Coaguila

Cell: (626) 817-3591

Office: (213) 351-9560

Website: <http://www.miguelcontrerasfoundation.org>

Email: diego@miguelcontrerasfoundation.org

Hours of Operation: 9:00 A.M.-5:00 P.M.

Ages Served: Youth/Adolescents and Adults

Languages: English and Spanish

Type of Service: Student Services

Type of Service:

The Miguel Contreras Foundation is a 501(c)(3) non-profit organization that honors the legacy of transformational union leader Miguel Contreras by serving local immigrant, working families through immigrant integration, civic engagement and education. Our year-round programming and services are directed towards students and families attending LAUSD schools, and promote leadership and community empowerment.

Additional Information:

For Students - Free year-round programming for undocumented and other immigrant students. Free 5-week summer program, leadership development, civic engagement opportunities, college-and job-readiness training, scholarships and financial aid resources, DACA workshops and immigration policy updates, connection to legal services and legal fairs.

For Parents/Families - Free year-round programming for undocumented and other immigrant parents. Free 5-week summer program, leadership development, civic engagement opportunities, information for parents on college and job readiness, scholarships and financial aid resources, DACA workshops and immigration policy updates, connection to legal services and legal fairs, trainings on workplace rights.

L.D. CENTRAL-ORGANIZATION RESOURCES

IMMIGRATION CENTER FOR WOMEN AND CHILDREN

634 S. Spring St., Ste 727

Los Angeles, CA 90014

Service Area: Local District Central

Contact Person: Marina Serrano

Phone: (213) 614-1163

Fax: (213) 654-1163

Website: icwclaw.org

Hours of Operation: 9:00 A.M.-5:00 P.M.

Ages Served: All Ages

Languages: Spanish

Type of Service: Legal

Type of Service:

U-Visa (for victims of violent crimes who aided in the investigation of that crime), VAWA (for victims of abuse married to US citizen or LPR), Special Immigrant Juvenile Visa (minors under 21 who live with a guardian in the US)

Additional Information:

People who are interested in receiving our services should call (213) 614-1165 x 1331 to set up a consultation appointment. We have funding available for those that cannot afford to pay.

L.D. EAST-ORGANIZATION RESOURCES

EL CAMINO REAL LIBRARY

4264 E. Whittier Blvd., Los Angeles, CA 90023

Service Area: Local District East

Contact Person: Tiffany Chow and Cindy Melendez

Phone: (323) 269-8102

Website: <http://www.colapublib.org/libs/elcaminoreal/>

Hours of Operation: Monday-Tuesday -
11:00A.M.-7:00 P.M.

Wednesday-Thursday-10:00 A.M.-6:00P.M.

Friday/Saturday-11:00 A.M.- 5:00 P.M.

Ages Served: 0-18

Languages: English, Spanish

Type of Service: Education

Type of Service:

Homework center consists of computer technology and homework helpers to support educational needs of students.

Family Place center consists of early childhood information, parent education, emergent literacy, socialization and family support

Additional Information:

Homework Center Hours: Monday-Tuesday: 3:00 P.M.- 6:30 P.M.; Wednesday-Thursday 3:00 P.M.- 5:30 P.M.; Friday 3:00 P.M.-4:40 P.M.; Saturday 12:00 P.M.-4:30 P.M.

Family Place Programs: Selected Fridays & Saturdays. Please call library or visit website for activity dates.

L.D. EAST-ORGANIZATION RESOURCES

EL CENTRITO DE APOYO

2677½ Zoe Ave., Huntington Park, CA 90255

Service Area: Local District East

Contact Person: Sol Ego Aguirre

Phone: (323) 312-0640

Fax: (323) 312-0642

Email: Sego-aguirre@prpsn.org

Website: Prpsn.org

Hours of Operation: Monday –Friday

9:00 A.M.-5:00 P.M.

Ages Served: 18-69

Languages: English, Spanish

Type of Service: Basic Need

Type of Service:

Spanish Language community Center that provides support groups, assistance w/job search and housing. We offer monthly workshops for our members.

Additional Information:

Walk-ins welcomed, no personal information needed

L.D. EAST-ORGANIZATION RESOURCES

EL CENTRO DE AYUDA

2130 E. 1st St., Ste 110, Los Angeles, CA 90033

Service Area: Local District East

Contact Person: Sara Sgarlata

Phone: (323) 526-9301

Fax: (323) 526-9118

Email: sara.sgarlata@elcentrodeayuda.org

Website: elcentrodeayuda.org

Hours of Operation: Monday-Thursday

8:00 A.M.-7:00 P.M. &

Friday 8:00 A.M.-5:00 P.M.

Ages Served: 5+

Languages: English, Spanish

Type of Service: Education & Basic Need

Type of Service:

Adult Services: Case Management, Financial Coaching, Free Income Tax/ITIN Assistance, Medical/Caslfresh Enrollments, Housing & Employment Assistance, Citizenship Assistance, Parenting Computer/ESL Classes, RiderRelief Transportation Coupons, Information & Referral Assistance.

Youth Services: Middle School Tutoring, College Readiness Corner/Mentoring, Leadership Group & College Trips

Additional Information:

Individuals can call or walk in to schedule an appointment and majority of the time will be seen day of or within 72 hrs.

L.D. EAST-ORGANIZATION RESOURCES

EAST LOS ANGELES WOMEN CENTER

1431 Atlantic Blvd., Los Angeles, CA 90022
Service Area: Local District East
Contact Person: Carmen Lopez /SART Coordinator
Phone: (323) 526-5819
Fax: (323) 526-5822
Website: <http://elawc.org/>

Hours of Operation: Monday-Thursday
9:00 A.M.-6:00 P.M. &
Friday 9:00 A.M.-4:30 P.M.
Ages Served: 12+
Languages: English, Spanish
Type of Service: Mental Health

Type of Service:

Offers counseling to survivors of sexual assault, domestic violence and support to their family/friends. Hospital accompaniment, court accompaniments and advocacy services are available to law enforcement, criminal justice agencies and social providers. Domestic violence community agencies, HIV/AIDS testing, education and prevention, community presentations and outreach.

Counseling services for Sexual Assault are individual for female/male 12yrs and over. There are no group counseling services. Services are in English and Spanish.

Domestic Violence counseling services are both individual and group. Services are for women 18yrs of age and over. Domestic Violence counseling for male clients 18yrs and over is individual sessions only. Services are in English and Spanish.

Additional Information:

Hotline 24/7 English/Spanish
Appointment only; client needs to contact main office to request services.

L.D. EAST-ORGANIZATION RESOURCES

PARA LOS NINOS

849 E. 6th St., Los Angeles, CA 90021
Service Area: Local District East
Contact Person: Evelyn Covia, Intake Coordinator
Phone: (213) 623-8446
Fax: (323) 312-0642
Website: Paralosninos.org

Hours of Operation: Monday–Friday
7:00 A.M.-7:00 P.M
Ages Served: 0-18
Languages: English, Spanish, & Tagalog
Type of Service: Mental Health

Type of Service:

Para Los Ninos Mental Health program serves children 0-15 yrs old. Services include individual and family therapy as well as skill building strategies for parents and children. A child psychiatrist is also available for Med support for our clients.

L.D. EAST-ORGANIZATION RESOURCES

UN PASO MAS

2677 ½ Zoe Ave , Huntington Park, CA 90255

Service Area: Local District East

Contact Person: Feliz Perez

Phone: (323) 312-0762

Fax: (323) 312-0642

Website: Prpsn.org

Hours of Operation: Monday-Friday

8:00 A.M.- 4:00 P.M.

Ages Served: 24-69

Languages: Spanish

Type of Service: Education

Type of Service:

Family Community Center provides support groups to families and educational workshops for the community with a goal of helping reduce stigma.

Additional Information:

Walk-ins welcomed, prefer workshops require prior registration.

L.D. EAST-ORGANIZATION RESOURCES

LEGAL AID FOUNDATION OF LOS ANGELES

5228 Whittier Blvd., Los Angeles, CA 90022

Service Area: Local District East

Contact Person: First available screener

Phone: (800) 399-4529

Website: www.lafla.org

Hours of Operation: 9:00 A.M.-5:00 P.M.

(Self-Help Center hours vary)

Ages Served: All Ages

Type of Service: Legal and Multiple Services

Type of Service:

We provide civil legal aid, meaning direct representation in court on civil matters especially with regard to housing and evictions, government benefits and domestic violence/family law. We also offer community education, usually in the form of know your rights workshops and legal clinics.

Additional Information:

Clients must be low-income to qualify for our services (see income table here <https://lafla.org/help/qualify/>).

At our Self-Help Centers (in four courthouses) litigants do not need to qualify income-wise.

We have a number of legal clinics and information sessions that can be found here:

<https://lafla.org/self-help/calendar/>

MEXICAN AMERICAN OPPORTUNITY FOUNDATION

5228 Whittier Blvd., Los Angeles, CA 90022

Service Area: All of L.A. (LD East)

Contact Person: Patricia Tierny-Enrollment Specialist

Phone: (323) 588-7320

Fax: (323) 588-8179

Website: www.MAOF.org

Hours of Operation: Monday-Friday

8:00 A.M.-5:00 P.M.

Ages Served: All Ages

Type of Service:

Provides Early Head Start services for babies as young as six months old and Head Start services for children ages 3-5.

Additional Information:

Please call each facility to inquire about specific program.

L.D. EAST-ORGANIZATION RESOURCES

NEIGHBORHOOD LEGAL SERVICES OF LOS ANGELES COUNTY (NLSLA)

1200 N. State St., Ste. 1014, Los Angeles, CA
Service Area: Local District East
Phone: (800) 433-6251

Hours of Operation: Differ in self help office & main offices
Languages: English, Spanish, Armenian, Chinese, Vietnamese, Tagalog and all other languages can be accessed through language line.
Type of Service: Legal

Type of Service:

Neighborhood Legal Services of Los Angeles County (NLSLA) is a non-profit law firm for more than 50 years our legal team has provided free assistance to individuals and families in the Antelope Valley and throughout Los Angeles county.

NLSLA Serves low income individuals and families who are unable to afford a private attorney. NLSLA provides education, advice and legal representation in the following areas: health, housing, domestic violence, consumer debt, public benefits, veteran benefits & criminal record clearing.

NLSLA services are free. We do not charge clients or community members for education, advice or legal representation.

Additional Information:

Hot line number is (800) 433-6251

L.D. NORTHEAST-ORGANIZATION RESOURCES

EL NIDO FAMILY SOURCE CENTER

11243 Glenoaks Blvd., Ste. #2, Pacoima, CA 91331

Service Area: Local District Northeast

Phone: (818) 896-7776

Fax: (818) 896-3667

Hours of Operation: Monday-Friday

8:00 A.M.-6:00 P.M.

Languages: English, Spanish

Type of Service: Education

Type of Service:

Parenting classes/English & Spanish on going (court approved)

Apply for CalFresh/Medi-cal (Monday's only by appt)

Woman's Support Group

Caregiver Certified Training (in Spanish only)

Case management

Tutoring grades 6-12

PSA onsite

Additional Information:

Walk-ins Welcome; Must be a city of Los Angeles resident to enroll. Bring proof of Income and address.

L.D. NORTHEAST-ORGANIZATION RESOURCES

NEIGHBORHOOD LEGAL SERVICES OF LOS ANGELES COUNTY (NLSLA)

1200 N. State St., Ste. 1014 Los Angeles, CA
Service Area: Local District Northeast
Phone: (800) 433-6251

Hours of Operation: Differ in self help office & main offices
Languages: English, Spanish, Armenian, Chinese, Vietnamese, Tagalog
Type of Service: Legal

Type of Service:

Neighborhood Legal Services of Los Angeles

County (NLSLA) is a non-profit law firm for more

than 50 years our legal team has provided free assistance to individuals and families in the Antelope Valley and throughout Los Angeles county.

NLSLA Serves low income individuals and families who are unable to afford a private attorney. NLSLA provides education, advice and legal representation in the following areas: health, housing, domestic violence, consumer debt, public benefits, veteran benefits & criminal record clearing. NLSLA services are free. We do not charge clients or community members for education, advice or legal representation.

Additional Information:

All other languages can be accessed through language line.

NEW ECONOMICS FOR WOMEN

(FREE LEGAL SERVICES AT FAMILY SOURCE CENTER)

6931 Van Nuys Blvd., Ste. 201, Van Nuys, CA 91406
Service Area: Local District Northeast
Contact Person: Jessica Leyva
Phone: (818) 786-4098 Ext. 107

Hours of Operation: Thursday
9:30 A.M.-1:30 P.M.
Languages: English and Spanish
Type of Service: Legal

Type of Service:

CARECEN is offering free legal services in various family source center locations throughout the city of Los Angeles. To be eligible for a free legal consultation, please call one of the following family source centers to start the enrollment process and to obtain more information about eligibility for the program. To enroll, you will need to show proof that you live in the city of Los Angeles, show proof of income and proof of identity.

Some of the services that we are offering at these sites include DACA applications (initial and renewals), Green card renewals, naturalization/citizenship applications and more. Additionally, these family source centers offer a variety of services & programs for parents & youth at no cost. Call to enroll & make an appointment. Additional services also offered on different days.

L.D. NORTHEAST-ORGANIZATION RESOURCES

PARS EQUALITY CENTER

4954 Van Nuys Blvd., 201, Sherman Oaks, CA 91403

Service Area: Local District Northeast

Contact Person: Peyman Malaz

Phone: (818) 616-3091

Website: www.parsequalitycenter.org

Hours of Operation: Monday-Friday

9:00 A.M.-5:00 P.M.

Ages Served: All ages

Languages: Farsi, Armenian, and Dari

Type of Service:

As a community-based social and legal services organization, Pars Equality Center is a registered 501(C)(3) non-profit dedicated to helping all members of the Iranian-American community and other Persian-speaking countries realize their full potential as informed, self-reliant, and responsible members of American society. We believe that learning and teaching the rights and responsibilities of citizenship in a democracy as well as the rules and rewards of entrepreneurship are the necessary ingredients for our success as a community. Pars Equality Center achieves its mission primarily by providing extensive social and legal services. Our Persian-speaking staff advocates for families and individuals in need with a strong focus on refugees, asylees, and those newcomers living in poverty.

Additional Information:

Resume Writing

Interview Skills Workshop

Mental Health Workshops

Business Workshops

Financial Aid and College Application Workshop

Financial Literacy Workshop

Computer Classes

ESL Classes

Citizenship Classes

Job Placement

Social Services

L.D. NORTHEAST-ORGANIZATION RESOURCES

SAN FERNANDO VALLEY COMMUNITY MENTAL HEALTH CENTER, INC.

16360 Roscoe Blvd., Van Nuys, CA 91406

Service Area: Local District Northeast

Phone: (818) 492-4065

Website: www.movinglivesforward.com

Hours of Operation: Monday-Thursday

9:00 A.M.-7:00 P.M.

Fridays 8:30 A.M. -5:00 P.M.

Ages Served: 0-18

Languages: English/Spanish/Persian

Type of Service: Mental Health

Type of Service:

SFVCM Inc, provides a full range of children's mental health services to ages 0-18 at three convenient locations in the Valley, North Hollywood, Mission Hills, and Van Nuys.

UCLA EARLY HEAD START

14423 Van Nuys Blvd., Arleta, CA 91331

Service Area: Local District Northeast

Contact Person: Angelica Vazquez

Phone: (818) 485-0129 X204

Fax: (818) 485-0136

Website: <http://www.elahealth.org/early-head-start/pages/how-to-apply.aspx>

Hours of Operation: Monday-Friday

8:30 A.M.-5:00 P.M.

Ages Served: 0-3 & pregnant woman

Languages: English and Spanish

Type of Service: Education

Type of Service:

UCLA Early Head Start is a free child development program for children 0-3 years old and pregnant woman. It is a home visiting program once a week for 1 ½ hours.

Additional Information:

Provide parent workshops and parent training on mental health and nutrition. Assist families with health and nutrition services.

L.D. NORTHEAST-ORGANIZATION RESOURCES

VALLEY COMMUNITY HEALTHCARE

6801 Coldwater Canyon Ave., North Hollywood, CA 91605

Service Area: Local District Northeast

Contact Person: Member Services Department

Phone: (818) 301-6399

Website: www.valleycommunityhealthcare.org

Hours of Operation: Monday-Friday

9:00 A.M.-5:00 P.M.

Ages Served: All ages

Languages: English and Spanish

Type of Service: Medical

Type of Service:

Valley Community Healthcare is a non-profit medical facility that provides a wide array of clinical and patient-centered health programs through two Centers in North Hollywood and North Hills and a school-based clinic in the San Fernando Valley outside Los Angeles.

Valley Community Healthcare is committed to improving the well-being of lower-income, medically underserved residents in our communities, regardless of their ability to pay and reducing visits to emergency rooms and urgent care facilities.

Every family member can be seen at the same facility by our providers and clinical specialists. Valley Community Healthcare offers culturally sensitive, integrated health services to about 25,000 men, women, children, and teens annually

Additional Information:

Member Services department: We will take walk-ins from 8:00am-3:30pm. The patient must walk-in with all required documents for the entire family. If the patient does not bring all documents, we will book them a future appointment for enrollment.

Other Site:

9119 Haskell Ave. North Hills, CA 91343

L.D. NORTHEAST-ORGANIZATION RESOURCES

VALLEY FAMILY CENTER

302 S. Brand Blvd., San Fernando, CA 91340

Service Area: Local District Northeast

Contact Person: Claudia Hernandez

Phone: (818) 365-8588

Fax: (818) 898-3382

Website: www.valleyfamilycenter.org

Hours of Operation: Monday-Friday

9:00 A.M.-8:00 P.M.

Ages Served: 5+

Languages: English and Spanish

Type of Service: Medical

Type of Service:

Valley Family Center provides counseling and educational services. Counseling services are provided individually, as couples, family, or in a group setting. Educational included after school tutoring and art classes.

Additional Information:

Individual, couple, family counseling (5yr and up) sliding scale fee.

Parent Education group (Spanish/English) – children’s expressive therapy groups.

Domestic Violence Victims (women) – coparenting.

YOUTH POLICY INSTITUTE

11623 Glenoaks Blvd., Pacoima, CA 91331

Service Area: Local District Northeast

Contact Person: Martha Cerna

Phone: (818) 492-4065

Fax: (818) 897-9793

Website: www.ypiusa.org

Hours of Operation: Monday-Friday

8:00 A.M.- 5:00 P.M.

Ages Served: 18 +

Languages: English and Spanish

Type of Service: Basic Need

Type of Service:

Employment Services

Additional Information:

Walkins, appointments, workshops, recruitment, career counseling, and job fairs.

L.D. NORTHWEST-ORGANIZATION RESOURCES

CALIFORNIA CHILDREN'S ACADEMY

7446 Alabama Ave., Canoga Park, CA 91303
Service Area: Local District Northwest
Contact Person: Sydney Irmas
Phone: (323) 837-4500
Fax: (323) 323-223-0954

Hours of Operation: Monday
6:00 A.M.-6:00 P.M.
Languages: Spanish/English,
Type of Service: Basic Need

Type of Service:

Free or Low cost child care services. Full Day –Full year for children 6 weeks to kinder.

Additional Information:

Has Varies Location throughout Los Angeles.

CENTRAL AMERICAN RESOURCE CENTER (CARECEN)

16501 Sherman Way, Ste. 245 Van Nuys, CA 91406
Service Area: Local District Northwest
Phone: (818) 616-6019
Website: <http://www.carecen-la.org>
<http://espanol.carecen-la.org/>

Hours of Operation: Monday
9:00 A.M.-5:00 P.M.
Languages: Spanish, English,
Central American
Type of Service: Legal

Type of Service:

We provide immigration legal services, listed below, at low or no cost. These services are also available at Family Source Centers throughout Los Angeles. CARECEN provides education, enrichment and leadership development programs for children, youth and adults through its Parent Center, Youth Center and citizenship classes. All programs are at no or low cost to the community. Our Day Laborer Center provides a humane way to look for work and offers English courses as well as information about labor, health and safety laws. There are no agency fees. We are involved in several coalitions that seek policy changes around immigration, education reform and workers' rights.

Additional Information:

Consult fee-\$25, except for U-Visa, VAWA, DACA, Naturalization/Citizenship.
Los Angeles Headquarters walk-ins on Wednesdays 9:00 A.M.-4:00 P.M.
San Fernando Valley office walk-ins on Mondays 9:00 A.M.- 4:00 P.M.

L.D. NORTHWEST-ORGANIZATION RESOURCES

CALIFORNIA DIGNITY HEALTH- NORTHRIDGE HOSPITAL

8210 Etiwanda St., Reseda, CA 91335
Service Area: Local District Northwest
Contact Person: Barbara Gonzalez
Phone: (818) 718-5903
Fax: (818) 718-5989

Hours of Operation: Monday-Friday
8:00 A.M.-5:00 P.M.; occasional weekends
Ages Served: School Aged Children to Adults
Languages: Spanish/English,
Type of Service: Medical

Type of Service:

In 1997, Northridge Hospital Medical Center established the center for healthier communities as a department of the hospital. CHC is dedicated to building community collaborative projects, leveraging local resources and developing effective strategies that assist children, adults and families with a goal of improving population health.

Additional Information:

Diabetes Wellness Rx (12wk Program)	Activate Your Heart (10 wk Program)
Chronic Disease Self-Management Program	Healthy Parenting
Walking Groups	School Nutrition
Great Kindness Challenges	

EL PROYECTO DEL BARRIO, INC

9140 Van Nuys Blvd., # 211, Panorama City, CA 91402
Service Area: Local District Northwest
Phone: (818) 895-2206
Fax: (818) 895-0824
Website: www.elproyecto.us

Hours of Operation: Monday, Wednesday,
& Friday 8:00 A.M.-5:00 P.M.; Tuesday &
Thursday 8:00 A.M.- 8:00 P.M.
Languages: Spanish, English,
Type of Service: Education

Type of Service:

Parenting Classes, Domestic Violence Class , Self Esteem and Anger Management classes

Additional Information:

Walk in accepted/Appointments

L.D. NORTHWEST-ORGANIZATION RESOURCES

HAVEN HILLS

PO Box 260, Canoga Park, CA 91305
Service Area: Local District Northwest
Contact Person: Claudia Hernandez
Phone: (818) 887-7481 x114
Website: www.havenhills.org

Hours of Operation: Monday-Friday
8:00 A.M.-5:00 P.M.
Ages Served: All Ages
Languages: Spanish/English,
Type of Service: Basic Need

Type of Service:

Provide 30 day crisis shelter, 18 month transitional housing (referred by case manager), outreach services and support groups for victims of intimate partner violence.

Additional Information:

All Genders Welcome
Undocumented Welcome
Teen Program coming
Outreach Services for Adults

NEW ECONOMICS FOR WOMEN

(FREE LEGAL SERVICES AT FAMILY SOURCE CENTER)

21400 Saticoy St., Fl 2. Canoga Park, CA 91304
Service Area: Local District Northwest
Contact Person: Laura Sanchez
Phone: (818) 887-3872 Ext. 403

Hours of Operation: Thursday
9:30 A.M.-1:30 P.M.
Languages: English and Spanish
Type of Service: Legal

Type of Service:

CARECEN is offering free legal services in various family source center locations throughout the city of Los Angeles. To be eligible for a free legal consultation, please call one of the following family source centers to start the enrollment process and to obtain more information about eligibility for the program. To enroll, you will need to show proof that you live in the city of Los Angeles, show proof of income and proof of identity.

Some of the services that we are offering at these sites include DACA applications (initial and renewals), Green card renewals, naturalization/citizenship applications and more. Additionally, these family source centers offer a variety of services & programs for parents & youth at no cost.

Additional Information:

Call to enroll & make an appointment. Additional services also offered on different days.

L.D. NORTHWEST-ORGANIZATION RESOURCES

THE HELP GROUP- PROJECT SAFE

8210 Etiwanda St., Reseda, CA 91335

Service Area: Local District Northwest

Contact Person: Melissa Miller

Phone: (818) 947-5514 / (818) 947-5553 (spanish)

Fax: (818) 988-2392

Hours of Operation: Monday-Friday

9:00 A.M.-6:00 P.M

Ages Served: All Ages

Languages: English/Spanish

Type of Service: Education/Basic Need

Type of Service:

Free in-home services provided to at-risk pregnant teens/women and parents with infants under 6mths of age. Risk factors include young prenatal age, current or post abusive relationship, current or past substance abuse or current or history of mental health issues. Services address child development, breastfeeding, parenting , safety, individual and family well-being.

Additional Information:

No walk-ins, no open DCFS cases, must live in San Fernando Valley or Santa Clarita Valley areas.

Workshops/classes are open to community when offered (i.e infant massage, breast feeding support).

L.D. SOUTH-ORGANIZATION RESOURCES

THE CHILDREN'S BUREAU

460 E. Carson Plaza Dr., Ste. 102, Carson, CA 90746

Service Area: Local District South

Contact Person: Erika Cruz

Website: All4kids.org

Hours of Operation: Monday - Friday

8:00 A.M.-5:00 P.M.

Languages: English, Spanish, Korean, Russian

Type of Service: Mental Health

Type of Service:

Mental Health Services

Additional Information:

We provide Informative Mental Health presentations & linkage to case management.

Other Sites:

3910 Oakwood Ave., Los Angeles, CA 90004

1910 Magnolia Ave., Los Angeles, CA 90007

DIDI HIRSCH MENTAL HEALTH SERVICES

1328 West Manchester Ave, Los Angeles, CA 90044

Service Area: Local District South

Contact Person: Rachel Gloer

Phone: (323) 778-9593

Website: didihirsch.org

Hours of Operation: Monday-Friday

8:30 AM- 5:00 PM, Varies by Site

Ages Served: 0-17; depending on the site

Languages: English, Spanish, Armenian

Type of Service:

Outpatient individual, and group counseling. Medication support offered, school based services, FSP, and FCCS.

Additional Information:

Client's can walk in to obtain an intake appointment or can call centralized intake at (310) 390-8896 8:30 A.M.-5:00 P.M. Has varies locations in Los Angeles.

L.D. SOUTH-ORGANIZATION RESOURCES

HATHAWAY SYCAMORES CHILD AND FAMILY SERVICES

75701 S. Eastern Ave., Ste. 550, Commerce, CA 90040

Service Area: Local District South

Contact Person: Sarah De Guzman

Phone: (323) 837-0838

Website: Hathaway-sycamores.org

Hours of Operation: Monday -Thursday

9:00 A.M.-7:00 P.M.;

Friday 9:00 A.M.-5:00 P.M.

Ages Served: 4-17, FSP 16-25yrs

Languages: English/Spanish

Type of Service: Mental Health & Basic
Need

Type of Service:

Provide individual, family therapy, case management and group to ages 4-17yrs in the home, community or clinic depending on need. Provide Psychological testing, Psychiatry, TBS (therapeutic behavioral services). Provide FSP (full service partnership), MAT (Multi disciplinary assessment team).

We also provide Youth Mentorship Program that provides monthly activities and quarterly community volunteer events. Middle school-aged youth are sponsored to attend R.M. Pyles Boys Camp and Boys and Girls State Summer Leadership Camps.

Learning Lab Center provides free academic assistance with science, writing and math (up to calculus) (ages Free access to internet for school homework projects. SAT testing preparation workshops and college application support (including scholarships) are also available.

Food Bank: The food bank is an Emergency Food Assistance Program (EFAP) that distributes food to eligible recipients. Food kits are distributed onsite every second and fourth Saturday of each month from 2-3pm. Limited food kits are available. Recipients must self-certify eligibility to receive food kits according to EFAP guidelines. Food bank is open to any qualifying individuals in the local community.

Currently, we offer a variety of Evidenced Based Practice (EBP) Models.

Additional Information:

Walk in's available, contact each service for times.

Other Sites:

840 N. Avenue 66, Los Angeles, CA 90042; (323) 257-9600 ext. 7146

2933 N. El Nido Dr., Altadena, CA 91001; (626) 243-9043

12510 Van Nuys Blvd., Ste. 201, Pacoima CA 91331; (818) 896-2255, ext. 8704

3741 Stocker St., Ste. 100, Los Angeles CA 90008; (323) 733-0322

L.D. SOUTH-ORGANIZATION RESOURCES

LEGAL AID FOUNDATION OF LOS ANGELES

7000 S. Broadway, Los Angeles, CA 90003

Service Area: Local District South

Website: www.lafla.org

Hours of Operation: 9:00 A.M.-5:00 P.M.

(Self-Help Center hours vary)

Ages Served: All Ages

Type of Service: Legal and Multiple Services

Type of Service:

We provide civil legal aid, meaning direct representation in court on civil matters especially with regard to housing and evictions, government benefits and domestic violence/family law. We also offer community education, usually in the form of know your rights workshops and legal clinics.

Additional Information:

Clients must be low-income to qualify for our services (see income table here <https://lafla.org/help/qualify/>). At our Self-Help Centers (in four courthouses) litigants do not need to qualify income-wise.

We have a number of legal clinics and information sessions that can be found here:

<https://lafla.org/self-help/calendar/>

MASADA HOMES COUNSELING & RESEARCH ASSOCIATES, INC.

108 W. Victoria Ave., Gardena, CA 90248

Service Area: Local District South

Contact Person: Terri Edwards, LMFT

Phone: (310) 715-2020, ext. 243

Hours of Operation: Monday-Friday

9:00 A.M.-5:00 P.M.

Ages Served: 2-18; Parent/Cargivers

Languages: English, Spanish, Arabic,
Japanese

Type of Service: Mental Health

Type of Service:

Individual & Family Therapy

Adult/Caregiver Services

Comprehensive Assessment & Service Plans

Psychiatric Evaluation

Medication Support

Occupational Therapy & Therapeutic Behavioral Services (TBS)

Case Management

Evidence Based Practices (EBPs)

Additional Information:

Services are provided at the school, in the home, or at our office located in Gardena, CA. Hours for services provided at the school and in the home vary depending upon scheduling agreed to with School Site/Family and assigned Therapist.

L.D. SOUTH-ORGANIZATION RESOURCES

RAINBOW SERVICES, LTD

453 W. 7th St., San Pedro, 90731
Service Area: Local District South
Contact Person: Program Aide
Phone: (310) 584-5450
Fax: (310) 548-0611
Website: Rainbowservicesdv.org

Hours of Operation: Monday- Friday
9:00 A.M.-5:00 P.M.
Ages Served: 18+
Languages: English/Spanish

Type of Service:

Assisting victims and families of Domestic Violence. We provide DV support groups, counseling, case management, Domestic Violence awareness, and referrals to emergency shelters.

Additional Information:

We do not provide same day appointments. Appointments only. Walk ins welcome.

THE CHILDREN'S COLLECTIVE

(FREE LEGAL SERVICES AT FAMILY SOURCE CENTER)

Rita Walters Learning Complex
915 W. Manchester Ave., Los Angeles, CA 90044
Service Area: Local District South
Contact Person: Gricela Arias
Phone: (323) 789-4717

Hours of Operation:
Tuesday 2:00 P.M.-6:00 P.M.
Languages: English and Spanish

Type of Service:

CARECEN is offering free legal services in various family source center locations throughout the city of Los Angeles. To be eligible for a free legal consultation, please call one of the following family source centers to start the enrollment process and to obtain more information about eligibility for the program. To enroll, you will need to show proof that you live in the city of Los Angeles, show proof of income and proof of identity.

Some of the services that we are offering at these sites include DACA applications (initial and renewals), green card renewals, naturalization/citizenship applications and more. Additionally, these family source centers offer a variety of services & programs for parents & youth at no cost.

Additional Information:

Call to enroll & make an appointment. Additional services also offered on different days.

L.D. SOUTH-ORGANIZATION RESOURCES

TOBERMAN NEIGHBORHOOD CENTER

131 N. Grand Ave., San Pedro, CA 90731

Service Area: Local District South

Contact Person: Monica Heredia

Phone: (310) 832-1145 ext:106

Fax: (310) 832-6712

Website: Rainbowservicesdv.org

Hours of Operation: Monday- Friday

9:00 A.M.-6:00 P.M.

Ages Served: All Ages

Languages: English/Spanish

Type of Service: Basic Need

Type of Service:

Toberman Neighborhood Center is a non-profit community-based organization committed to assisting Harbor Area families and individuals by delivering life-changing services that encourage, inform, educate, and empower them to live healthy purposeful lives.

The Case Managers can assist you with the following services:

Food Pantry Liheap (utility asst.)

Auxiliary (thrift store) Public Counsel

Government Benefits (medical/food stamps)

You will need to bring the following:

Current Proof of Income and Current Proof of Address

All Children's Current Report Cards

If you don't have all your documents come in anyway so we can try to assist you.

Additional Information:

Walk In Hours:

Monday: 9:00 A.M.-11:00 A.M.

Tuesday: 9:00 A.M.-11:00 A.M. & 1:00 P.M.-5:00 P.M.

Wednesday: 1:00 P.M.-5:00 P.M.

Thursday: 1:00 P.M.-5:00 P.M.

Friday: 9:00 A.M.-11:00 A.M.

Appointments are available:

Monday: 1:00 P.M.-7:00 P.M.

Wednesday: 9:00 A.M.-11:00 A.M.

Thursday: 5:00 P.M.-7 P.M.

Friday: 1:00 P.M.-5:00 P.M.

L.D. SOUTH-ORGANIZATION RESOURCES

WATTS COUNSELING AND LEARNING CENTER

1465 E. 103rd St., Los Angeles, CA 90002

Service Area: Local District South

Phone: (323) 564-7911

Fax: (323) 569-8527

Website: <http://community.kp.org/watts>

Hours of Operation: Monday-Friday

7:00A.M.-7:00 P.M.

& Saturday 7:30 A.M. - 4:00 P.M.

Ages Served: 3+

Languages: English/Spanish

Type of Service:

The Watts Counseling and Learning Center is a nonprofit Community Benefit program of Kaiser Permanente Southern California. Since 1967, the Center has provided counseling, outreach, and educational services to the residents of the Watts community. Kaiser Permanente Health Plan membership is not required to receive these services.

L.D. WEST-ORGANIZATION RESOURCES

AMERICAN RED CROSS

11355 Ohio Ave., Los Angeles, CA
Service Area: Local District South
Phone: (626) 407-4536
Website: <http://www.redcross.org/>

Hours of Operation: 9:00 A.M.-5:00 P.M.
Ages Served: All Ages
Languages: All
Type of Service: Emergency Services

Type of Service:

Restoring Family Links alleviates the suffering of family members separated by conflict, disasters, migration and other humanitarian crises worldwide. Free of charge, this service gives families a way to restore contact.

Additional Information:

Tracing: Provided to re-establish communication between family members separated internationally by war, migration or other humanitarian situations. The purpose can be to reconnect family members who had been in regular contact with each other before such an emergency situation separated them or to determine or document the fate of a loved one.

Health and Welfare: These inquiries are handled on an exceptional basis for vulnerable clients who have no other means to re-establish contact with their family overseas. These requests are accepted on humanitarian grounds for especially vulnerable individuals such as the elderly, ill, handicapped persons, or minor children. Oftentimes Health and Welfare inquiries involve an elderly person who has recently been hospitalized or transferred to a long-term care facility.

International Disaster Inquiries: After an international disaster Red Cross disaster family linking services may be available. Possible services could include acceptance of Disaster Inquiries, the use of a family linking website (either the ICRC* family links site or a specially developed site for the national society) or other services such as provision of satellite or cellular phones for those affected by the disaster to contact their relatives.

Certificates of Detention: The American Red Cross provides service to individuals of any nationality who request written verification issued by the ICRC of their captivity or detention as a prisoner of war or political detainee. When the ICRC visits detention centers it registers all of the detainees that it visits. The ICRC checks these registration lists in order to provide Certificates of Detention to former detainees.

Travel documents: The American Red Cross works with the ICRC to provide ICRC travel documents for people who are seeking permanent resettlement in a third country and have no valid passport or other document enabling them to cross international borders. The ICRC can issue travel documents to refugees and displaced or stateless persons who are unable to return to their country of origin or go to their country of choice because they lack the proper documents.

L.D. WEST-ORGANIZATION RESOURCES

CHRYSALIS

1853 Lincoln Blvd., Santa Monica, CA 90404

Service Area: Local District West

Contact Person: Dora Papel

Phone: (310) 401-9400

Website: www.changelives.org

Hours of Operation: Monday-Thursday
8:00 A.M.- 4:00 P.M.

& Friday 8:00 A.M. -12:00 P.M.

Ages Served: 18+

Languages: English/Spanish

Type of Service: Employment

Type of Service:

Chrysalis is a non profit organization dedicated to creating a pathway to self-sufficiency for homeless and low income individuals by providing services and resources needed to find and retain employment

Additional Information:

Orientation is Monday- Thursday at 8am sharp.

Background and legal status is not an issue.

Other Sites:

522 S. Main St., Los Angeles, CA 90013

Phone: (213) 806-6300

13545 Van Nuys Blvd., Pacoima, CA 91331

Phone: (818) 794-4200

L.D. WEST-ORGANIZATION RESOURCES

FOUNDATION FOR EARLY CHILDHOOD EDUCATION

5636 Fountain Ave., Los Angeles, CA 90028

Service Area: Local District West

Contact Person: Dora Olaguez/Cindy Nishi

Phone: (626) 572-5107

Website: <http://foundationheadstart.org>

Email: Fountain1@foundationheadstart.org

Hours of Operation: Monday- Friday

8:00 A.M.-4:30 P.M.

Ages Served: 3-5

Languages: English/Spanish

Type of Service: Education

Type of Service:

Head Start/State Preschool program offering free preschool services and support services in Health, Mental Health, Family Services, Disabilities and Nutrition for children ages 3-5 years old and their families. Free meals for children who participate. Children do not have to be potty trained. Services proved to children with special needs.

Additional Information:

Has multiple locations in Los Angeles.

Program Hours:

Part-day program: 3.5 hours a day

Full-day program: 7 hours a day

Dosage program: 6.5 hours a day

JUNIOR BLIND OF AMERICA

5300 Angeles Vista Blvd., Los Angeles, CA 90043

Service Area: Local District West

Contact Person: Lois Booth

Phone: (323) 295-6393

Fax: (323) 296-1128

Website: www.juniorblind.org

Hours of Operation: Monday- Friday

8:00 A.M.-3:00 P.M.

Ages Served: 3-22

Languages: English/Spanish

Type of Service: Education

Type of Service:

The Special Education School at Junior Blind provides education, based on a student's IEP, for students with moderate to severe disabilities: including, but not limited to, Intellectually Disabled, Autism, multi disabled, blind/visually impaired, orthopedically impaired, etc. In addition, we provided related services such as O & M, OT, PT, Speech and Language Therapy, Specially Designed PE, Assistive Technology and Vision Services

Additional Information:

Anyone can call and make an appointment to tour the school We have a Spanish speaker for those parents who need a tour in Spanish.

L.D. WEST-ORGANIZATION RESOURCES

KOREAN RESOURCE CENTER- KRC

900 S. Crenshaw Blvd., Los Angeles, CA 90019

Service Area: Local District West

Contact Person: Isabel King

Phone: (323) 937-3718

Website: www.krcla.org

Hours of Operation: Monday-Thursday

9:00 A.M.-5:00 P.M.

Ages Served: All Ages

Languages: English/Korean

Type of Service:

Integration of services, education, culture, organizing, and coalition building empowering low incomes.

Additional Information:

Provide health access, housing, organizing movement, financial empowerment, immigration services/ education and youth programs.

Other Site:

540 S. Kinglsey Dr., Ste. B, Los Angeles, CA 9.0020

L.D. WEST-ORGANIZATION RESOURCES

LATINO RESOURCE ORGANIZATION, INC.

610 California Ave., Venice, CA 90291

Service Area: Local District West

Contact Person: Adriana Mendez

Phone: (310) 578-6069

Fax: (310) 578-0490

Website: www.latinoresource.org

Hours of Operation: Monday 8:30 A.M.-6:00P.M.

Tuesday 8:30 A.M.-7:00 P.M.

Wednesday 8:30A.M.-7:00 P.M.

Thursday 8:30 A.M.-5:00 P.M.

& Friday 8:30 A.M.-5:00 P.M.

Ages Served: Youth (K-12th); adults, seniors, and families

Languages: English/Spanish

Type of Service:

LRO has been providing a variety of multicultural social services to communities in the Greater West Los Angeles areas. Headquartered in the City the

West Los Angeles FamilySource Center a community grass-root resource center where families can reach to receive a consortium of services that the quality of life.

Youth Services:

Youth After School Tutoring

College Corner (college prep)

FAFSA Assistance

Homework Club

Math and Reading Skills "STAR" Assessments

Youth Summer Program

Back-to-School Family Resource Event

Adult Services:

Free Income Tax Preparation Program - IRS VITA

Covered California

Immigration & Naturalization Services

Senior Services

Emergency Transportation Programs

Financial Literacy Education

Holiday Family Resource Event

Case Management

Counseling Services

Legal Services

Additional Information:

Please call for appointment.

L.D. WEST-ORGANIZATION RESOURCES

WORKSITE WELLNESS L.A.

5955 S. Western Ave., Los Angeles, CA 90047

Service Area: Local District West

Contact Person: Luis Pardo

Phone: (323) 758-9480

Fax: (323) 758-8348

Website: www.worksitewellnessla.org

Hours of Operation: Monday-Friday

9:00 A.M.-5:00 P.M.

Ages Served: All Ages

Languages: English/Spanish

Type of Service: Medical

Type of Service:

We provide Health Education Presentations and enrollment assistance for free and low-cost health coverage programs (Medi-Cal and MyHeathLA) to uninsured individuals and families in Los Angeles County. We also provide extensive follow-up to confirm enrollments, ensure utilization of services and retention of benefits/coverage.

Additional Information:

Enrollment assistance can be provided by appointment, or walk ins are welcome. Health Education Presentations are presented at Clinics, Schools, Community Centers, Churches, etc.

L.D. WEST-ORGANIZATION RESOURCES

YPI-EARLY HEAD START

5955 S. Western Ave., Los Angeles, CA 90047

Service Area: Local District West

Contact Person: Anahi Lopez

Phone: (213) 893-8067

Fax: (323) 744-2207

Website: Ypiusa.org/ehs

Hours of Operation: Monday-Friday

7:30 A.M.-5:30 P.M.

Ages Served: 6 weeks - 3 years

Languages: English/Spanish

Type of Service: Education

Type of Service:

We provide full day and full year education for 898 infant & toddlers in 13 classrooms. Each Child is assigned a primary caregiver to ensure healthy, social & emotional development and a secure attachment to a significant adult. Classrooms are designed to provide healthy, safe, stimulating & predictable spaces to encourage learning curiosity, problem solving, exploring and playing.

Additional Information:

Center based services provide early learning, care and enrichment experiences to children in an early care and education setting. Staff members also visit family homes at least four times a year.

OTHER-ORGANIZATION RESOURCES

COMMUNITY LAWYERS, INC.

1216 E. Compton Blvd., Compton, CA 90221

Service Area: Southeast Los Angeles

Contact Person: Belen Bernal

Phone: (310) 635-8181

Fax: (310) 638-4644

Website: <http://www.community-lawyers.org/>

Email: mbelen.bernal@gmail.com

Hours of Operation: Varies, Usually
10:00 A.M.-5:00 P.M.

Languages: English and Spanish

Type of Service: Legal

Type of Service:

Community Lawyers, Inc. provides low-and moderate-income people access to affordable legal services and develops innovative opportunities for attorneys and law student to serve in under-served communities.

Additional Information:

During our office hours, we assist with walk-ins that deal with basic questions and legal documents. Our services include immigration services, citizenship application, legal permanent resident card renewals, and DACA renewals.

IMMIGRATION RESOURCE CENTER OF SAN GABRIEL VALLEY

303 W. Colorado Blvd., Monrovia CA 91016

Service Area: San Gabriel Valley

Contact Person: Tori Jones

Phone: (626) 509-9472

Website: <http://www.ircs gv.org/>

Email: tjones@ircsgv.org

Type of Service:

Providing low cost legal services to the immigrant community.

Additional Information:

We do not accept walk-ins, appointments are made by calling our phone number at (626) 509-9472.

OTHER-ORGANIZATION RESOURCES

JEWISH FAMILY SERVICE OF LOS ANGELES

Service Area: Los Angeles Area
Contact Person: Jennifer Glazer
Phone: (877) 275-4537
Website: www.jfsla.org

Hours of Operation: Monday- Tuesday
8:30 A.M.-5:00 P.M.;
Fridays 8:30 A.M.- 3:30 P.M.
Languages: English, Spanish, Russian,
Farsi, and Hebrew
Type of Service: Basic Needs

Type of Service:

Information and Referral
Counseling and Support
Food and Hunger
Shelter Services
Services for Older Adults & Those Living with Disabilities

Additional Information:

All services can be reached through JFS Central Access (877)275-4537.
Multiple Locations

KIDS' COMMUNITY DENTAL CLINIC

6400 W. Elmwood Ave., Burbank, CA 915061
Contact Person: Ana Gomez, RDS
Phone: (818) 841-8010
Fax: (818) 841-8006
Website: www.kidsclinic.org

Hours of Operation: Monday-Friday
8:30 A.M.-5:00 P.M.; Some Saturdays
(Self-Help Center hours vary)
Ages Served: 6 months - 18
Languages: English, Spanish, Armenian
Type of Service: Medical

Type of Service:

Pediatric and General Dentistry for Children ages 6 months through 18 years. No geographic limits. Medi-Cal accepted. Uninsured/Low income families need to complete an eligibility interview with documentation of income for children to become patients. Continued care through age 18.

Additional Information:

We participate in school-linked and community outreach events to educate children on preventing cavities, to provide free screenings and preventive care. Emergency visits are free. Annually, during National Children's Oral Health Month or February, we provide free services to be advertised on our website.

OTHER-ORGANIZATION RESOURCES

LEGAL AID FOUNDATION OF LOS ANGELES

601 Pacific Ave., Long Beach, CA 90802
1640 5th St., Ste. 124, Santa Monica, CA 90401
Website: www.lafla.org

Hours of Operation: 9:00 A.M.-5:00 P.M.
(Self-Help Center hours vary)
Ages Served: All Ages
Type of Service: Legal and Multiple Services

Type of Service:

We provide civil legal aid, meaning direct representation in court on civil matters especially with regard to housing and evictions, government benefits and domestic violence/family law. We also offer community education, usually in the form of know your rights workshops and legal clinics.

Additional Information:

Clients must be low-income to qualify for our services (see income table here <https://lafla.org/help/qualify/>).

At our Self-Help Centers (in four courthouses) litigants do not need to qualify income-wise.

We have a number of legal clinics and information sessions that can be found here: <https://lafla.org/self-help/calendar/>

LOS ANGELES REGIONAL FOOD BANK

Phone: (323) 234-3030
Website: lafoodbank.org

Hours of Operation: Monday-Saturday
8:30 A.M.-5:00 P.M.
Ages Served: All Ages/Varies by program
Languages: English/Spanish
Type of Service: Basic Need

Type of Service:

The Los Angeles Regional Food Bank distributes food through programs and a network of 625+ partner agencies (such as soup kitchens, food pantries, senior centers, etc.) throughout LA County. To find a local food distribution, please use our pantry locator: <https://www.lafoodbank.org/find-food/pantry-locator/>

Our CalFresh Outreach Team helps clients determine their eligibility for SNAP: <https://www.lafoodbank.org/learn/programs-services/calfresh/>

Additional Information:

You can learn more about our programs here: <https://www.lafoodbank.org/learn/programs-services/>.
Multiple Locations

OTHER-ORGANIZATION RESOURCES

LOS ANGELES COUNTY OFFICE OF IMMIGRANT AFFAIRS

East Los Angeles County Hall
4801 E. 3rd St., Los Angeles, CA 90022
Phone: 1 (800) 593-8222
Website: <http://oia.lacounty.gov>

Hours of Operation: Monday-Friday
8:00 A.M.-5:00 P.M.

Type of Service:

The mission of the Los Angeles County Office of Immigrant Affairs is to advance the well-being of all immigrants in the County of Los Angeles by providing and connecting you with support services to help you in all aspects of your life, including: ONE-STOP Shop for all County services, Consumer protection for you, your family, and your community support to help you, your family, and your community succeed, celebrating your contributions in making Los Angeles a better place for all.

MAYOR'S OFFICE OF IMMIGRANT AFFAIRS

200 N. Spring St., Los Angeles, CA 90012
Phone: (213) 978-0600
Website: <https://www.lamayor.org/Immigrants>

Type of Service:

Our vision is to ensure all Angelenos, regardless of immigration status, are connected to community resources, have access to critical government services, are engaged in civic life, and are informed about critical immigration law and policy.

OTHER-ORGANIZATION RESOURCES

MEXICAN AMERICAN OPPORTUNITY FOUNDATION

5657 E. Washington Blvd., Commerce, CA 90040
Service Area: Commerce, East Los Angeles, Montebello
and surrounding areas
Contact Person: Lezvia Sabrano-Receptionist
Phone: (323) 890-1555
Fax: (323) 588-1556
Website: www.MAOF.org

Hours of Operation: Monday-Friday
8:00 A.M.-5:00 P.M.
Ages Served: All Ages

Type of Service:

Provides Early Head Start services for babies as young as six months old and Head Start services for children ages 3-5.

Additional Information:

Please call each facility to inquire about specific program.

NEIGHBORHOOD LEGAL SERVICES OF LOS ANGELES COUNTY (NLSLA)

1104 E. Chevy Chase Dr., Glendale, CA 91205
9354 Telstar Ave., El Monte, CA 91731
Service Area: Other
Phone: (800) 433-6251

Hours of Operation: Differ in self help office and
main offices
Languages: English, Spanish, Armenian, Chinese,
Vietnamese, Tagalog and all other languages can be
accessed through language line.
Type of Service: Legal

Type of Service:

Neighborhood Legal Services of Los Angeles
County (NLSLA) is a non-profit law firm for more
than 50 years our legal team has provided free assistance to individuals and families in the Antelope
Valley and throughout Los Angeles county.

NLSLA Serves low income individuals and families who are unable to afford a private attorney. NLSLA
provides education, advice and legal representation in the following areas: health, housing, domestic
violence, consumer debt, public benefits, veteran benefits & criminal record clearing.

NLSLA services are free. We do not charge clients or community members for education, advice or
legal representation.