

Los Angeles Unified School District

Office of Environmental Health and Safety

ALBERTO M. CARVALHO
Superintendent of Schools

CARLOS A. TORRES
Director, Environmental Health and Safety

JENNIFER FLORES
Deputy Director, Environmental Health and Safety

NOTICE OF EXEMPTION

THIS NOTICE WAS POSTED

ON September 19 2024

UNTIL October 21 2024

REGISTRAR – RECORDER/COUNTY CLERK

2024 196570



FILED
Sep 19 2024

Dean C. Logan, Registrar – Recorder/County Clerk

Electronically signed by BYRON PATTON JR

To:
County Clerk and Registrar-Recorder
County of Los Angeles
12400 Imperial Highway
Norwalk, CA 90650

From:
LAUSD OEHS
333 S. Beaudry Avenue
21st Floor
Los Angeles, CA 90017

Project Title:

Sun Valley Transportation Center Electrification Project

Project Location – Specific:

The Sun Valley Transportation Center Electrification Project (Project) will include the use of multiple sites. These sites include the following:

- Sun Valley Transportation Center - 11247 Sherman Way, Sun Valley CA 91352
- Van Nuys Bus Yard - 16200 Roscoe Blvd, Van Nuys, CA 91406
- Tuxford Bus Yard - 11660 Tuxford Street, Sun Valley, CA 91352
- Former Collins Elementary School - 5717 Rudnick Avenue, Woodland Hills, CA 91367
- Rinaldi Adult Education Center - 17450 Rinaldi St, Granada Hills, CA 91344

Project Location – City:

Los Angeles

Project Location – County:

Los Angeles

Description of Nature, Purpose, and Beneficiaries of Project:

Los Angeles Unified School District (LA Unified or District) has committed to the complete electrification of the Sun Valley Transportation Center (SVTC) by 2026. This Project is being developed in accordance with a resolution adopted by the Los Angeles Unified Board of Education (Board) in 2019 that commits the District to achieving 100% clean,



renewable energy in its electricity sector by 2030 and in all energy sectors – including heating, ventilation, air conditioning, cooking and transportation – by 2040.¹

As part of this commitment, Los Angeles Unified will purchase 180 electric buses, chargers and appropriate electric infrastructure to fully electrify the SVTC. The buses currently based at the SVTC are equipped with internal combustion engines powered with Compressed Natural Gas (CNG) and propane fuels. This will be the first bus yard in the District to transition completely from CNG to electric-powered buses. On December 12, 2023, the Board approved a budget of \$88,700,000 for the purchase of the electric buses and generators and another budget of \$80,120,640 for electrification of the SVTC.

Delivery of 180 new electric buses and 25 mobile electrical generators is expected to start in October 2024 and be complete by January 2025. The new electrical buses will be temporarily stored at the former Collins Elementary School (Collins) and Rinaldi Adult Education Center (Rinaldi) sites. The buses will be commissioned (installation of safety & communication equipment, District branding, California Highway Patrol inspections, and other protocols) before they are put into service. Collins may also be used to accommodate additional temporary bus staging needs.

During the electrification of the SVTC, which is expected to take approximately one year, the maintenance service garage and the fuel station will remain in operation. The Van Nuys Bus Yard and Tuxford Bus Yard sites will serve as interim operational sites for both fossil fuel buses and the new electrical buses and mobile electrical generators.

The following is a summary of specific proposed development and logistical coordination scope for each site that will support the Project and are depicted in Figures 1 through 4:

Sun Valley Transportation Center

- Construction activities at Sun Valley are forecast to start 4Q-2025 through 4Q-2026.
- Provide 182 new Electric Vehicle (EV) charger dispensers, eight (8) Level 2 chargers for white fleet (passenger) vehicles and reconnect 6 exiting chargers with new service.
- Provide and install new electric service using two (2) new 4,000A transformers provided by the Los Angeles Department of Water and Power (LADWP).
- Provide and construct a new 500kW solar array and canopy support structure and 500kw battery.
- Demolish existing and construct a new approximately 1,458 square foot bus wash building.
- Construct a new approximately 2,100 linear feet, 10-foot high, ornamental security fence around the property's perimeter.
- Update the existing men's (1) and women's (1) restrooms to be ADA compliant.
- Provide a new accessible ramp and accessible parking at the office building.
- Remove and abate pavement containing asbestos and replace with new paving.
- Provide new paving where existing paving has deteriorated.
- Provide asphalt paving overlay where existing paving is not deteriorated.
- Trench for underground conduit servicing the EV chargers, battery inverter system, and the new electrical services.
- Cap and abandon existing underground CNG piping in place (where the abandoned gas piping does not interfere with new trenching).

¹ LAUSD Board of Education Report. Resolution 018-19/20. <https://www.lausd.org/cms/lib/CA01000043/Centricity/Domain/1500/Board%20Resolution%20-%20100%20Percent%20Clean%20Energy%20-%202020.pdf>

Tuxford Bus Yard

- Utilize Tuxford site for 40 electric buses, approximately 175 fossil fueled buses, and 27 white fleet starting in 4Q-2024 and going through 4Q-2026.
- Provide temporary bus operation offices in existing buildings with minimal tenant improvements.
- Provide parking for approximately 28 light weight vehicles for bus operations administration and white fleet.
- Provide daily access to mobile fueling trucks to fuel propane-fueled electrical charging stations and fossil fueled buses during the hours of 8:00 am to 10:00 pm. Most fossil fuel buses are expected to fuel at Van Nuys Bus Yard or off-site third-party fueling facilities.
- Fuel five (5) electrical generators during morning hours and fossil fuel buses during afternoon/evening hours.
- Commence bus operations and activities at 5:00 am going through 9:00 pm, with most activities occurring between 5:00 am and 6:00 pm.
- Operate electrical charging generators between 6:00 pm and 4:00 am, Monday through Friday.

Van Nuys Bus Yard

- Utilize the Van Nuys Bus Yard for electrical buses starting in 4Q-2024 through 4Q-2026.
- Provide parking for 136 electrical buses, 17 propane-fueled mobile electrical charging stations and 114 fossil fueled buses will remain with the existing site.
- Commence bus operations and activities at 5:00 am going through 9:00 pm with most activities occurring between 5:00 am and 6:00 pm.
- Charge electrical buses on site and operate mobile generators from 6:00 pm to 4:00 am, Monday through Friday.
- Temporarily relocate approximately 150 fossil fueled buses from the Van Nuys Bus Yard to the Tuxford site.

Rinaldi Adult Center

- Provide storage parking space for approximately 12 electrical buses starting in 4Q-2024 through 1Q-2025.

Collins ES

- Provide parking for approximately 100 non-operating buses starting in 4Q-2024 and going through 1Q-2025.
- Install temporary security lighting and temporary security field office building with restroom facilities

The Project will be implemented per all applicable State, federal, and local regulations, as well as all District Standards and Specifications; such as those provided in the updated Standard Conditions of Approval for District Construction, Upgrade, and Improvements Projects (SCs) as adopted by the Board of Education in December 2023.² LAUSD's SCs, design guidelines, and best management practices are designed to be incorporated into the Project design in order to avoid or limit potential adverse impacts associated with the District's projects.

Name of Public Agency Approving the Project:

Los Angeles Unified School District

² LAUSD OEHS, "Standard Conditions of Approval for District Construction, Upgrade, and Improvements Projects" <http://achieve.lausd.net/cega>. Adopted by the Board of Education on December 12, 2023.



Name of Person or Agency Carrying Out Project:

Los Angeles Unified School District

Exempt Status: (check one below)

- ☐ Ministerial [Public Resources Code (PRC) Section 21080(b)(1); CEQA Guidelines Section 15268³]:
- ☐ Declared Emergency [PRC Section 21080(b)(3); CEQA Guidelines Section 15269(a)]:
- ☐ Emergency Project [PRC Section 21080(b)(4); CEQA Guidelines Section 15269(b)(c)]:
- ☒ Categorical Exemption (PRC Section 21084; CEQA Guidelines Sections 15300 -15333):
- *CEQA Guidelines Section 15301 – Existing Facilities*
 - *CEQA Guidelines Section 15303 – New Construction or Conversion of Small Structures*
 - *CEQA Guidelines Section 15304 – Minor Alterations to Land*

Reasons why project is exempt:

Section 15301 Existing Facilities

Class 1 consists of the operation, repair, maintenance, permitting, leasing, licensing, or minor alteration of existing public or private structures, facilities, mechanical equipment, or topographical features, involving negligible or no expansion of use beyond that existing at the time of the lead agency's determination.

The Project will utilize various sites controlled by the District that are currently used for parking and transportation related services. Only the SVTC will include a construction component, as described above. The improvements at the SVTC and the other sites being utilized as part of the Project would constitute operation, repair, maintenance, and minor alteration of existing facilities involving no expansion of the facilities' use. Therefore, the Project constitutes minor alterations to an existing school site that result in no expansion of use and meets the requirements of CEQA Guidelines Section 15301.

Section 15303 New Construction or Conversion of Small Structures

Class 3 consists of construction and location of limited numbers of new, small facilities or structures; installation of small new equipment and facilities in small structures; and the conversion of existing small structures from one use to another where only minor modifications are made to the structure.

The Project will utilize various sites controlled by the District that are currently used for parking and transportation related services. Only the SVTC will include a construction component, as described above. The improvements at the SVTC would constitute construction and location of limited numbers of new, small facilities or structures; installation of small new equipment and facilities in small structures; and the conversion of existing small structures from one use to another where only minor modifications are made to the structure. Therefore, the Project satisfies the requirements of CEQA Guidelines Section 15303.

Section 15304 – Minor Alterations to Land

Class 4 consists of minor public or private alterations in the condition of land, water, and/or vegetation which do not involve removal of healthy, mature, scenic trees except for forestry or agricultural purposes.

The Project will utilize various sites controlled by the District that are currently used for parking and transportation related services. Only the SVTC will include a construction component, as described above. Construction activities that may

³ CEQA Guidelines can be found at California Code of Regulations Title 14, Chapter 3, Section 15000 - Section 15387.



involve minor alterations to land include minor trenching and backfilling for installation of the new EV chargers, battery inverter system, and the new electrical services, as well as the augured piles required for the solar array and canopy support structures (Section 15304(f)). All impacted surfaces would be restored. The Project will not remove healthy, mature, or scenic trees.

Further, the Project will involve temporary use of the Rinaldi, Collins, and Hughes sites for storage of buses and commissioning activities, that have negligible or no permanent effects on the environment (Section 15304(e)). Therefore, the Project fulfills the requirements of CEQA Guidelines Section 15304.

Section 15300.2 – Exceptions

Section 15300.2 of the CEQA Guidelines, Exceptions, provides conditions under which categorical exemptions are inapplicable. Review of the Project indicates that they would not violate any of the exceptions, as described below.

1. The project would occur in certain specified sensitive environments or locations;

The Project sites are fully developed areas within urbanized communities.⁴ The Project sites are not designated as biologically sensitive sites or locations and do not contain sensitive resources or habitat that will be impacted by the Project. The Project will be contained exclusively within the boundaries of the sites. The nearest Significant Ecological Area is the Verdugo Mountains located approximately 1.9 miles east of the SVTC.^{5,6} As such, the Project will not impact sensitive environments or locations.

2. Cumulative impacts would be considerable because successive projects of the same type would occur at the same place over time;

The site associated with the Project are active bus maintenance yards, schools, and other facilities and there will likely be ongoing maintenance activities and minor projects to keep them operational. As the Project will not result in any lasting adverse impacts once construction of the Project is complete, the Project would not contribute to cumulative impacts when considered with expected successive projects.

3. There is a reasonable possibility that the activity would have a significant effect on the environment due to unusual circumstances.

There are no known unusual circumstances that would have a significant effect on the environment. The removal of trees is not anticipated as part of the proposed scope of work. However, should the Project be altered to include the removal of trees, LAUSD's Office of Environmental Health & Safety (OEHS) must be notified immediately. District policy requires consultation with an arborist to determine if the trees are a protected native species. Additionally, written approval from the school principal will be required before any trees can be removed. If tree removal is scheduled to occur between February 1 and August 31, a nesting bird survey would be performed prior to removal activities, per Standard Condition of Approval (SC) SC-BIO-3 of the Subsequent Program Environmental Impact Report (SPEIR).^{7,8}

⁴ City of Los Angeles Planning Department, *Zoning and Information Management System*, <http://zimas.lacity.org/>, accessed August 2024.

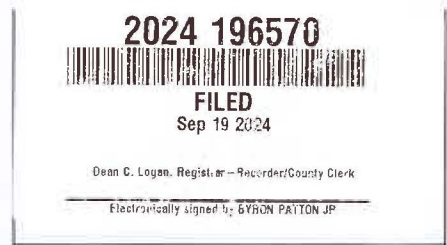
⁵ United States Fish and Wildlife Service Critical Habitat Portal,

<https://fws.maps.arcgis.com/home/webmap/viewer.html?webmap=9d8de5e265ad4fe09893cf75b8dbfb77>, accessed August 2024.

⁶ Los Angeles County Department of Regional Planning, <https://www.arcgis.com/apps/mapviewer/index.html?layers=c01bf32ee6d4768ac0a82470c810648>, accessed August 2024.

⁷ LAUSD OEHS, "Standard Conditions of Approval for District Construction, Upgrade, and Improvements Projects," Adopted by the Board of Education on February 5, 2019.

⁸ LAUSD OEHS, "Tree Trimming and Removal Procedure", <http://achieve.lausd.net/ceqa>.



The Project will include minor ground-disturbing activities at the SVTC during construction. These activities are not considered unusual circumstances for the classes of projects under which an exemption is claimed. Nevertheless, consideration must be given to the management of pavement removal and excavated soils associated with earthwork activities for the Project. A Preliminary Environmental Assessment – Equivalent (PEA-E) prepared for the SVTC site determined that soils containing chemicals of potential concern (COPCs) are present on the Project site and will need to be addressed as part of the Project. The PEA-E recommended that a Soils Management Plan (SMP) be implemented as part of constructions. The SMP will address the potential health risks to construction workers, onsite staff, and surrounding students and residents through the implementation of soil management processes intended to close potential exposure routes to potentially impacted soils. OEHS will provide oversight to ensure that these activities are conducted in compliance with the requirements of District Specification 01 4524, relevant provisions of South Coast Air Quality Management District Rule 1466, and other applicable environmental agency rules and requirements.⁹ Furthermore, as set forth in SC-CUL-6, SC-CUL-7, SC-CUL-9, SC-CUL-10, and SC-GEO-2 of the SPEIR, construction activities must be stopped immediately and OEHS notified upon discovery of subsurface features, such as buried resources (i.e., paleontological resources, archaeological resources), tanks or seepage pits, or stained/odoriferous soils.¹⁰ Lastly, any construction and demolition waste shall be recycled to the maximum extent feasible per SC-USS-1 of the Program EIR.¹¹

The Project will also include temporary use of mobile charging stations with propane-powered generators to charge the electric buses at the Tuxford and Van Nuys Bus Yards while the SVTC is under construction. The mobile charging stations will generally operate at both sites from 6:00 pm to 4:00 am, Monday through Friday until the SVTC improvements are completed. Due to the presence of residential sensitive receptors that are proximate to these sites, a noise technical study was completed to evaluate potential impacts caused by the mobile generators.¹² The primary noise source from the mobile charging stations is the exhaust vents about 10-12 feet high. Each mobile charging station can charge eight (8) school buses at once, creating a perimeter around each station that blocks line of sight and acts as a noise barrier. the noise study shows that unmitigated noise levels from the mobile charging stations would be below City of Los Angeles nighttime noise thresholds at all sensitive receptors at both sites. Impacts would be less than significant, and no mitigation is required.

Regarding vehicle travel impacts, the Project would not have an adverse impact. According to the Governor's Office of Planning & Research, replacement projects designed to improve the condition of existing transportation assets (e.g., transit systems) and do not add additional motor vehicle capacity would not likely lead to a substantial or measurable increase in vehicle travel, and therefore generally should not require an induced travel analysis.¹³ Therefore, the Project will not have a significant effect on the environment due to unusual circumstances.

4. *The project may result in damage to scenic resources, including but not limited to trees, historic buildings, rock outcroppings, or similar resources within a highway officially designated as a state scenic highway;*

⁹ LAUSD OEHS, "Section 01 4524 Environmental Import/Export Materials Testing", http://www.laschools.org/documents/file?file_id=219798234&show_all_versions_p=t

¹⁰ LAUSD OEHS, "School Upgrade Program Final Subsequent Environmental Impact Report," <http://www.lausd.org/ceqa>. Adopted by the Board of Education on December 12, 2023

¹¹ *Ibid.*

¹² LDN Consulting, "Preliminary Findings at 11660 Tuxford Street and 16200 Roscoe Boulevard for the LAUSD Electric Generator in Los Angeles, CA. April 12, 2024.

¹³ State of California, Governor's Office of Planning & Research. *Technical Advisory on Evaluating Transportation Impacts in CEQA*. April 2018.



The closest designated state scenic highway to the Project site is State Route 2 (SR 2), which is located approximately 10.6 miles north of the SVTC.¹⁴ The Project will not be visible from SR 2. Therefore, the Project would not result in damage to scenic resources or similar resources within a highway officially designated as a State scenic highway.

5. *The project is located on a site which is included on any list compiled pursuant to Section 65962.5 of the Government Code; or*

The Project is not located on a site included on any list compiled pursuant to Section 65962.5 of the Government Code.¹⁵ Therefore, the Project will have no impacts related to being located on a hazardous waste site.

6. *The project may cause a substantial adverse change in the significance of a historical resource.*

The only permanent structures at the SVTC are the Administration Office (built in 1944) and the Bus Garage (built in 1979). Both are at or over 45 years old, meeting LAUSD's threshold for review as a potential historic resource and requiring evaluation for historic eligibility. The OEHS' Historic Preservation Specialist determined that SVTC site is ineligible as an historical resource.¹⁶ Therefore, the Project would have no impact to a historic resource.

Prepared By:

Edward Paek, AICP
Senior CEQA Project Manager/Contract Professional

Phone and Email:

(213) 241-4676
edward.paek@LAUSD.net

Signed by:

Carlos A. Torres,
CEQA Officer of the Los Angeles Unified School District

Date:

9/16/24

¹⁴ Los Angeles County Department of Regional Planning, http://gis.planning.lacounty.gov/GIS-NET3_Public/Viewer.html, accessed January 2023.

¹⁵ http://www.dtsc.ca.gov/SiteCleanup/Cortese_List.cfm, accessed August 2024.

¹⁶ LAUSD. 2024. Historic Resources Inventory. Los Angeles, CA.

[illegible]

FILED

Sep 19 2024

Dean C. Logan, Registrar - Recorder/County Clerk

Electronically signed by BYRON PATTON JR

Figure 1. Sun Valley Transportation Center Site Plan

SUN VALLEY BUS GARAGE

AREA 1 - SCOPE OF WORK



AREA 2 - OPERATIONAL DURING CONSTRUCTION



AREA 3 –PROPOSED NEW PV SOLAR PANELS



AREA 3 – NEW BUS WASH



LEVEL 2



LEVEL 3



LEVEL 2 (EV WHITE FLEET)

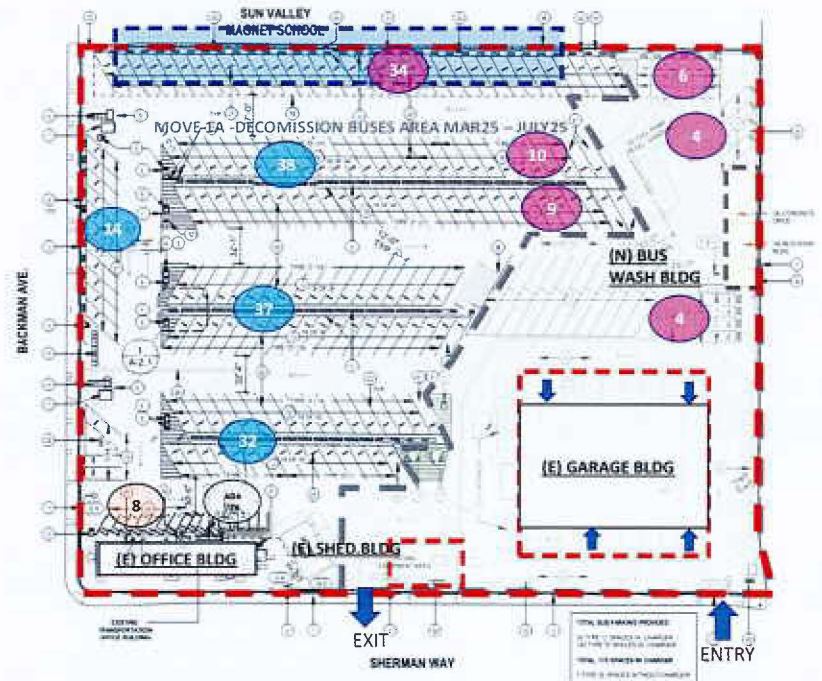


Figure 2. Collins Site Plan

COLLINS ES

93 buses - NOT OPERATIONAL



(N) CHAIN LINK
FENCE SCREEN
(E) CMU WALL & TREES

(E) STORAGE CONTAINER



PRE NEW EV BUSES

12 BUSES OCT 24 - Rinaldi
40 BUSES NOV 24 - Tuxford
93 BUSES DEC 24 - Collins
35 BUSES JAN 25 - Van Nuys

PORTABLE OFFICE & TOILET | TEMP. POWER | SECURITY | LIGHTING



Sep 19 2024

Electronically signed by: BYRON PATTON JR

Figure 3. Rinaldi Site Plan

RINALDI ADULT ED.

12 EV BUSES

- Q4 2024
- 12 EV buses (Storage)

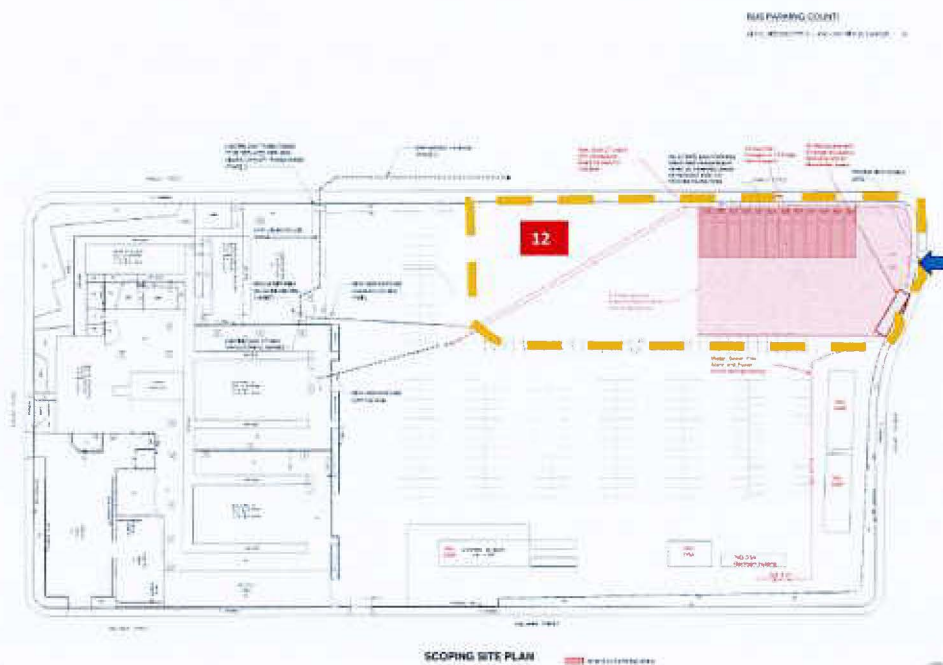
 50 BUSES

Figure 4. Van Nuys Bus Yard Site Plan

VAN NUYS BUS YARD

250 buses

- 110 CNG BUSES
- 136 Electric Buses B
17 Generators G
- 150 BUSES MOVED
TO TUSFORD BY
MARCH 31,2025

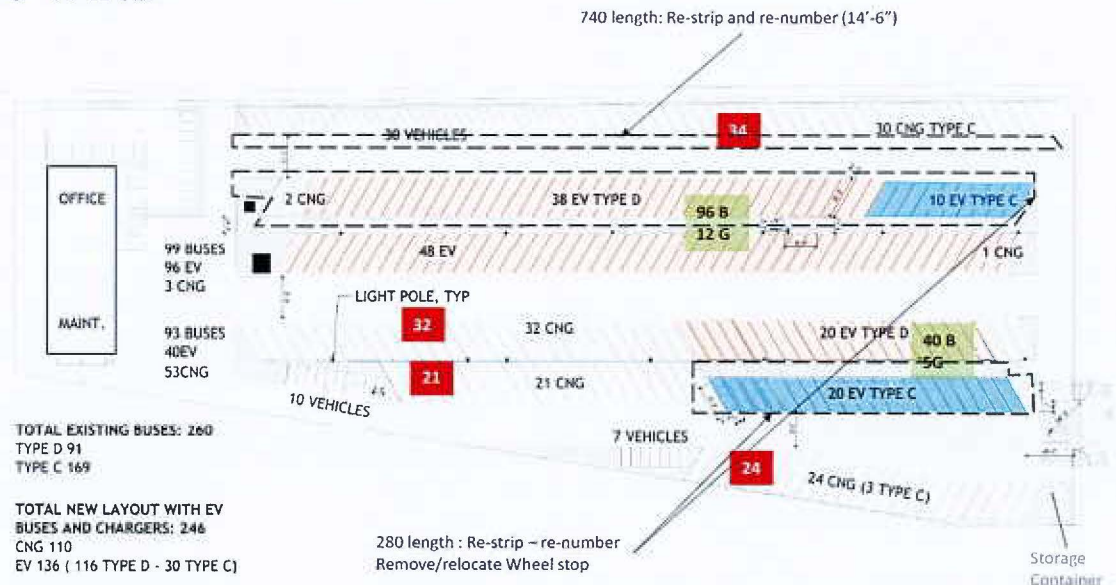


Figure 2. Tuxford Bus Yard Site Plan

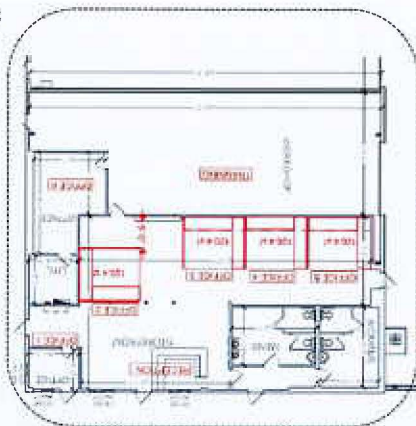
TUXFORD SITE

235 buses

PART 1
 40 EV BUSES + 6 CNG BUSES

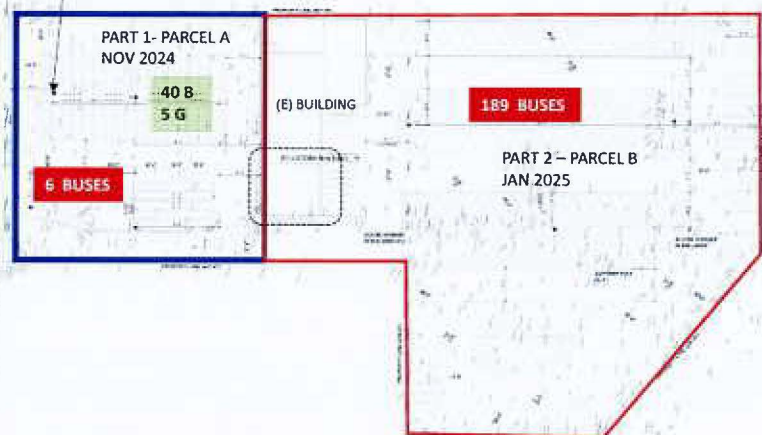
PART 2
 189 CNG BUSES

40 NEW EV
 18 FROM SV
 150 BUSES MOVED TO
 TUXFORD FROM VN
 27 WHITE FLEET



(E) BUILDING

LIGHTING POLE, TYP



LAUSD Revolving Account
Los Angeles County Registrar-
Date 09/16/2024

Type
Reference 10373216-CEQA-1
Original Amt. \$75.00

Balance Due \$75.00

09/19/2024 055523
Discount \$0.00
Payment \$75.00
Check Amount \$75.00

Dean C. Logan
Los Angeles County Registrar / Recorder
12400 Imperial Highway, Norwalk, CA
(800)201-8999

BUSINESS FILINGS REGISTRATION

NORWALK DEPARTMENT HEADQUARTER

Cashier: B. PATTON JR



* 2 0 2 4 0 9 1 9 1 2 5 0 0 0 8 *

Thursday, September 19, 2024 12:32 PM

Item(s)

Fee	Qty	Total
NoE - County Posting Fee 2024196570	1	\$75.00
Total		\$75.00

Total Documents: 1

Customer payment(s):

Check \$75.00

Check List:
#55523 \$75.00