

# East Los Angeles Food Distributions

## **CENTRO MARAVILLA SERVICE CENTER**

4716 EAST CESAR E CHAVEZ AVENUE, LOS ANGELES, CA 90022  
\*BY APPOINTMENT ONLY. PLEASE CALL (323) 260-2804  
MON-FRI 8:00AM-5:00PM

## **EAST LOS ANGELES SERVICE CENTER**

133 N SUNOL DR, LOS ANGELES, CA 90063  
\*BY APPOINTMENT ONLY. PLEASE CALL (323)260-2801  
MON-FRI 8:00AM-5:00PM

## **EASTMONT COMMUNITY CENTER**

701 HOFNER AVE. LOS ANGELES, CA 90022  
THURSDAYS 9AM - 11AM. PLEASE CALL (323) 276-7998

## **EAST LOS ANGELES SALVATION ARMY**

140 N EASTMAN AVE. LOS ANGELES, CA 90063  
MONDAY-FRIDAY 9:00AM-3:30PM. PLEASE CALL (323) 263-7577

## **BIENESTAR**

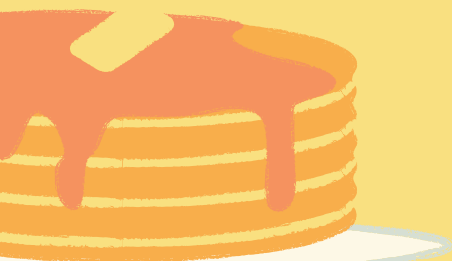
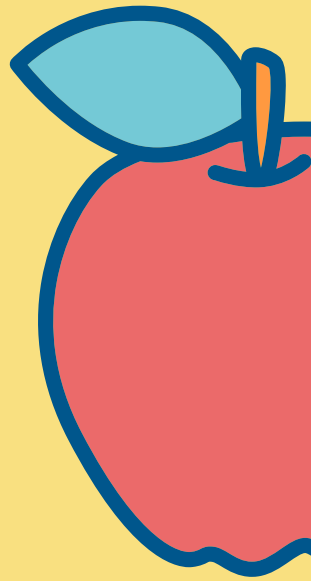
5326 E BEVERLY BLVD. LOS ANGELES, CA 90022  
TUESDAYS, THURSDAYS T: 11AM-2:45PM /  
TH: 12-1:45 PM AND 3-4:45PM.  
PLEASE CALL (866) 590-6411

## **DOOR OF HOPE COMMUNITY CENTER**

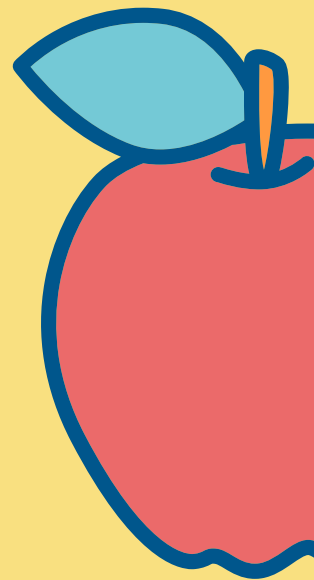
1414 S. ATLANTIC BLVD. LOS ANGELES, CA 90022  
MONDAY AND THURSDAY, 9:00AM-11:00AM  
FOR EAST LA RESIDENTS ONLY. PROOF OF RESIDENCE

## **WEINGART EAST LOS ANGELES YMCA**

2900 WHITTIER BOULEVARD, LOS ANGELES, CA 90023  
MON - FRIDAY 8:00AM-2:00PM. PLEASE CALL (323) 260-7005



# East Los Angeles Food Distributions



## **YWCA - UNION PACIFIC**

4315 UNION PACIFIC AVE, LOS ANGELES, CA 90023  
TUESDAYS 12PM-2PM. PLEASE CALL (323) 415-6057

## **MONTE SION CENTER FOOD BANK**

4405 E OLYMPIC BLVD. LOS ANGELES, CA 90023  
WEDNESDAYS, FRIDAYS W10AM-2PM / F: 8AM-12PM  
PLEASE CALL (323) 974-2856

## **THE GARAGE BOARD SHOP FOOD BANK**

759 S ATLANTIC BLVD. LOS ANGELES, CA 90022  
FRIDAYS AT 10:00 AM  
PLEASE CALL (323) 266-5782

## **VIA CARE COMMUNITY HEALTH CENTER**

4755 EAST CESAR E CHAVEZ AVE. LOS ANGELES, CA 90022  
EVERY FOURTH FRIDAY OF THE MONTH 9:00AM-11:00AM  
PLEASE CALL (323)268 - 9191

## **VIA CARE COMMUNITY HEALTH CENTER**

507 S. ATLANTIC BLVD. LOS ANGELES, CA 90022  
EVERY SECOND MONDAY OF THE MONTH FROM 1:00PM-3:00PM  
FOR MORE INFORMATION, PLEASE CALL (323) 268-9191



# East Los Angeles Distribucion de Comida

## **CENTRO MARAVILLA SERVICE CENTER**

4716 EAST CESAR E CHAVEZ AVENUE, LOS ANGELES, CA 90022

LUNES-VIERNES 8:00AM-5:00PM

\*POR CITA. PARA OBTENER MAS INFORMACION,  
LLAME A (323) 260-2804

## **EAST LOS ANGELES SERVICE CENTER**

133 N SUNOL DR, LOS ANGELES, CA 90063

LUNES-VIERNES 8:00AM-5:00PM

\*POR CITA. PARA OBTENER MAS INFORMACION,  
LLAME A (323)260-2801

## **EASTMONT COMMUNITY CENTER**

701 HOEFNER AVE. LOS ANGELES, CA 90022

JUEVES 9AM - 11AM. PARA OBTENER MAS INFORMACION,  
LLAME A (323) 276-7998

## **EAST LOS ANGELES SALVATION ARMY**

140 N EASTMAN AVE. LOS ANGELES, CA 90063

LUNES-VIERNES 9:00AM-3:30PM.

PARA OBTENER MAS INFORMACION,  
LLAME A (323) 263-7577

## **BIENESTAR**

5326 E BEVERLY BLVD. LOS ANGELES, CA 90022

MARTES, 11AM-2:45PM /JUEVES: 12-1:45 PM Y 3-4:45PM.

PARA OBTENER MAS INFORMACION,  
LLAME A (866) 590-6411

## **DOOR OF HOPE COMMUNITY CENTER**

1414 S. ATLANTIC BLVD. LOS ANGELES, CA 90022

LUNES Y JUEVES, 9:00AM-11:00AM

SÓLO RESIDENTES DE EL ESTE DE LOS ANGELES. NECESARIO  
PRUEBA DE RESIDENCIA

## **WEINGART EAST LOS ANGELES YMCA**

2900 WHITTIER BOULEVARD, LOS ANGELES, CA 90023

LUNES-VIERNES 8:00AM-2:00PM.

PARA OBTENER MAS INFORMACION,  
LLAME A (323) 260-7005



# East Los Angeles Distribucion de Comida

## **YWCA - UNION PACIFIC**

4315 UNION PACIFIC AVE, LOS ANGELES, CA 90023

MARTES 12PM-2PM.

PARA OBTENER MAS INFORMACION, LLAME A(323) 415-6057

## **MONTE SION CENTER FOOD BANK**

4405 E OLYMPIC BLVD. LOS ANGELES, CA 90023

MIERCOLES, 10AM-2PM / VIERNES 8AM-12PM

PARA OBTENER MAS INFORMACION, LLAME A(323) 974-2856

## **THE GARAGE BOARD SHOP FOOD BANK**

759 S ATLANTIC BLVD. LOS ANGELES, CA 90022

VIERNES A LAS 10:00 AM

PARA OBTENER MAS INFORMACION, LLAME A (323) 266-5782

## **CLINICA COMUNITARIA VIA CARE**

4755 EAST CESAR E CHAVEZ AVE. LOS ANGELES, CA 90022

CADA CUARTO VIERNES DEL MES, DE 9:00AM-11:00AM

PARA OBTENER MAS INFORMACION, LLAME A (323)268 - 9191

## **CLINICA COMUNITARIA VIA CARE**

507 S. ATLANTIC BLVD. LOS ANGELES, CA 90022

CADA SEGUNDO LUNES DEL MES, DE 1:00PM-3:00PM

PARA OBTENER MAS INFORMACION, LLAME A (323) 268-9191

