

Team Kid

“Creating a **community** of voices and **choices** to ensure **access** and **accomplishment** for ALL learners.”



Purpose + Pathways + Personalization = Prepared



LOCAL DISTRICT EAST ACTIVE TRANSFORMATION PLAN PROFESSIONAL DEVELOPMENT

PURPOSE + PATHWAYS + PERSONALIZATION = PREPARED



LOCAL DISTRICT EAST

THEORY OF CHANGE

PURPOSE: Creating a community of voices and actualizing agency for stakeholders

+

PATHWAY: Developing choices that enact optimal opportunities for A-G achievements

+

PERSONALIZATION: Organizing access for all learners to achieve locally and globally

=

PREPARED: Accomplished and prepared for graduation, college, career and civic engagement



Local District EAST
2015-2016

! WORK HARD!

Imagination

Aspirations

Hibernation

Perspiration

If I have seen
further than others,
it is by standing
on the shoulders
of giants.
Sir Isaac Newton

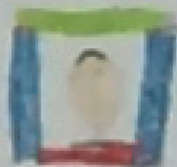
$$E=mc^2$$



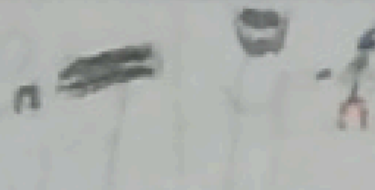
2nd Grade

¿Cuales son tus sueños y aspiraciones?

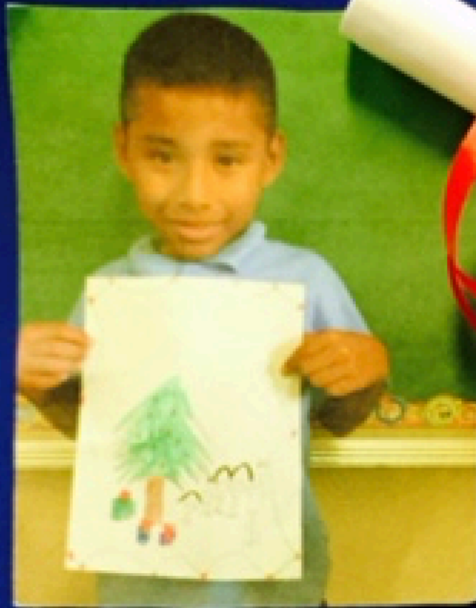
What are your dreams and aspirations?



REACH
STARS



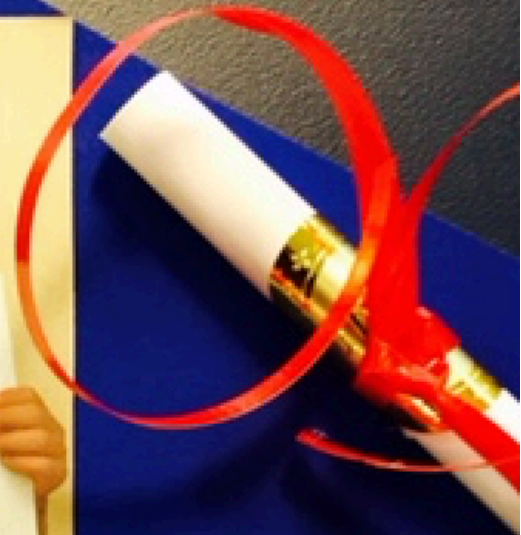
REACH
STARS



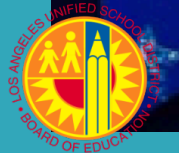
My dream is to...
be an
Astronaut





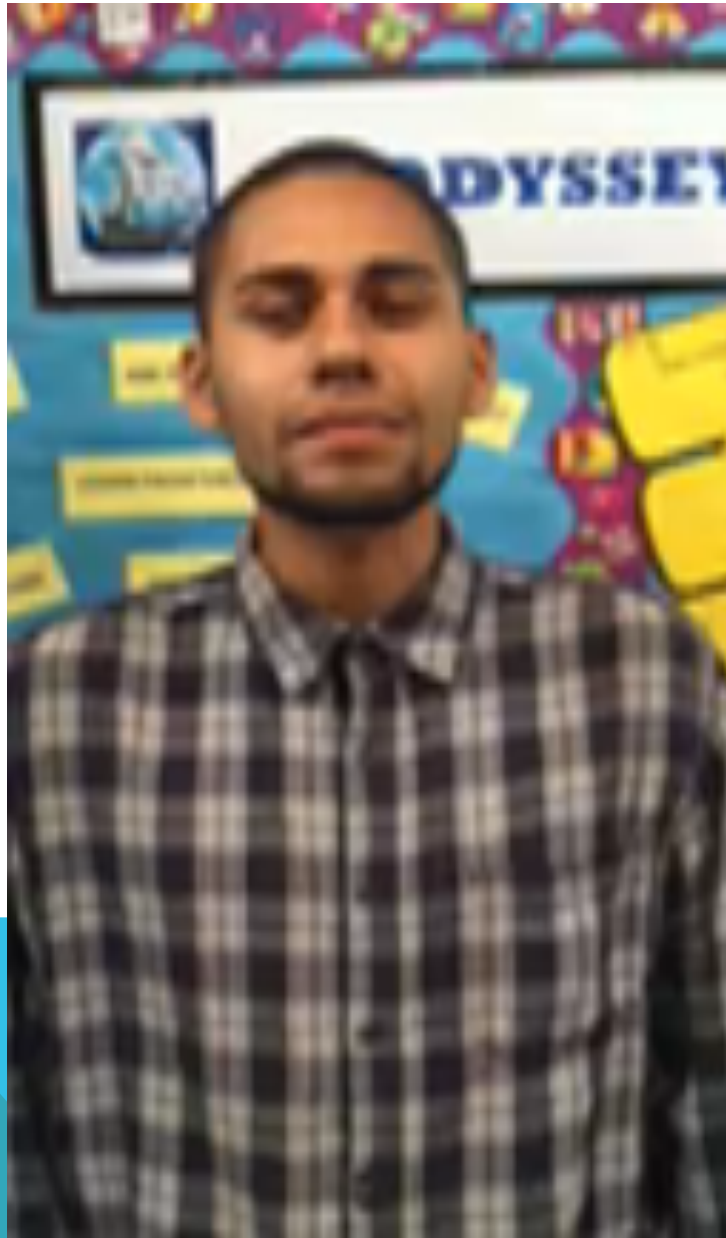


My dream is to...
be a
Doctor





STUDENT VOICE AND ASPIRATIONS



PURPOSE:

Creating a community of voices and actualizing agency for stakeholders



Local District EAST
2015-2016

PURPOSE:

CREATING A COMMUNITY OF VOICES AND ACTUALIZING AGENCY FOR STAKEHOLDERS



- A-G Student Motivation and Aspirations
- Where Everybody Belongs
- College Culture Kits: ABCs and A-G
- Leadership Identity Training and Network Development
- Collaborative School Partnership Design



Local District EAST
2015-2016

Please Note: This is not an exhaustive list.

PATHWAYS:

Developing choices that enact optimal opportunities for A-G achievements



Local District EAST
2015-2016

PATHWAYS:

DEVELOPING CHOICES THAT ENACT OPTIMAL OPPORTUNITIES FOR A-G ACHIEVEMENTS



- GOT Credit Options
 - PASS/STAR 17/RIG
 - Edgenuity Virtual Licenses
 - Auxiliaries
- Multi-tiered behavioral and academic support system in all pathways
- Mastery Learning and Grading PD
- Disciplinary Literacy
 - Document Based Questions (DBQ)
 - NGSS Community Partnerships



Local District EAST
2015-2016

Please Note: This is not an exhaustive list.

PERSONALIZATION:

Organizing access for all learners to achieve locally and globally



Local District EAST
2015-2016

PERSONALIZATION:

ORGANIZING ACCESS FOR ALL LEARNERS TO ACHIEVE LOCALLY AND GLOBALLY



- Collaborative Lesson Design
 - Quality Planning and Training Network
 - Calibrated Design Repositories: Learning Management System
- Personalized Accelerations and Interventions
 - Implementation of Technology that differentiates and closes opportunity gaps
- Systemic use of data to accelerate instruction
 - Early Warning Indicators
 - English Learner Milestones
 - Cohort model of students who are supported by adult and peer mentors



Local District EAST
2015-2016

Please Note: This is not an exhaustive list.

PREPARED:

Accomplished and prepared for graduation,
college, career and civic engagement



Local District EAST
2015-2016

PREPARED:

ACCOMPLISHED AND PREPARED FOR GRADUATION, COLLEGE, CAREER AND CIVIC ENGAGEMENT

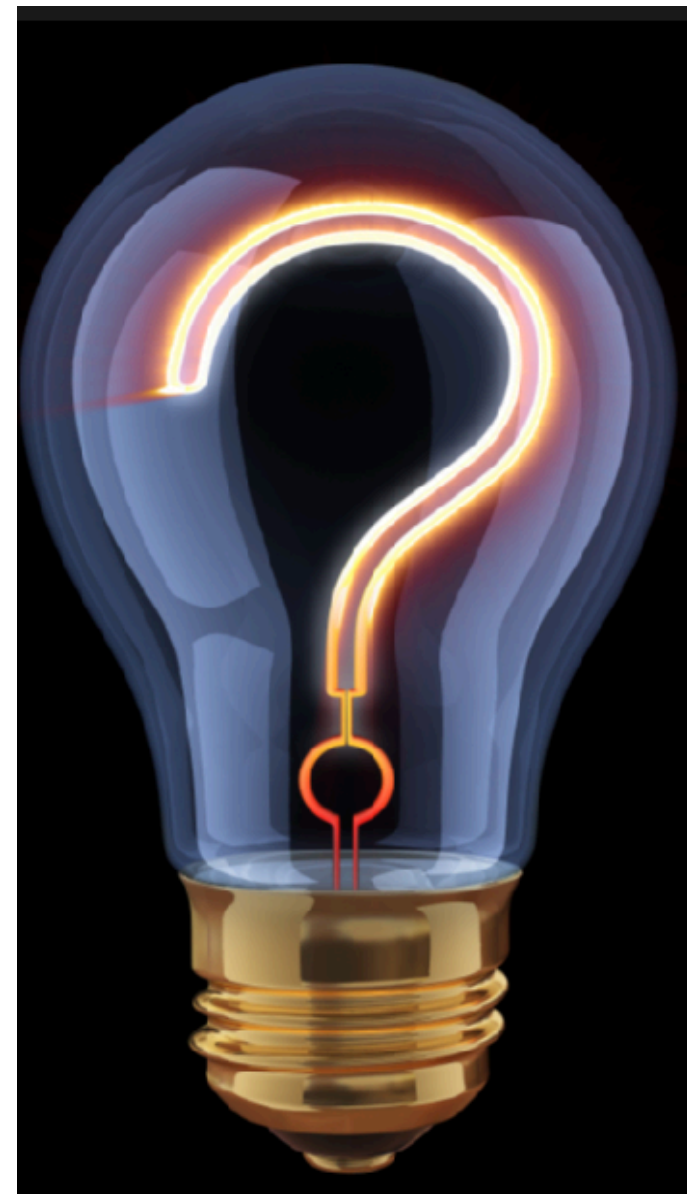


- ABCs and A-Gs: A-G awareness, personalized monitoring, differentiated accelerations
 - Early Literacy Foundational Skills
- Increase civic engagement through community partnerships and student internship opportunities
 - Increase and expand Linked Learning partnerships
- College pathways and P-16 Collaboratives (E.g. GO East LA, USC Family of Schools, CSU Dominguez Hills)



Local District EAST
2015-2016

Please Note: This is not an exhaustive list.



Local District EAST
2015-2016

THE END

