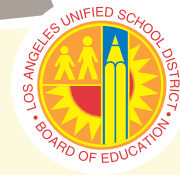


# LAUSD Linked Learning – Fact Sheet

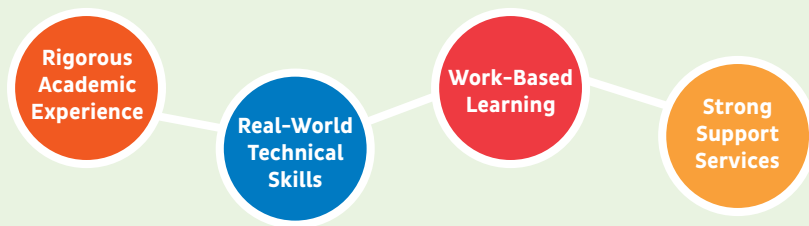


## College & Career-Ready Pathways for Students



High schools are not working for large numbers of young people. In California, almost a third of new ninth-graders drop out before graduating. Another third finish high school but lack the academic and technical readiness to succeed in college or a career. Only a third of high school students in California graduate on time and transition easily to postsecondary education and lasting career success.

### The Four Components of Linked Learning



Linked Learning addresses some of the fundamental challenges facing California’s high schools. Many traditional academic programs do not feel relevant to students’ lives and aspirations. At the same time, traditional career technical education (CTE) often lacks the academic rigor required for access to and success in college.

Linked Learning is an approach to education that transforms the traditional high school experience to help students gain an advantage in high school, postsecondary education, and careers. By turning high school education into a personally relevant, engaging experience for all students, Linked Learning exposes them to previously unimagined college and career opportunities. Students can choose among industry-themed pathways in fields such as engineering, arts and media, and biomedicine and health. When students love what they are learning, they work harder, dream bigger, and learn more. Research shows that Linked Learning students have higher rates of engagement and higher graduation rates than their peers at traditional high schools. This approach to education is helping to create an engaged, disciplined, and productive future workforce for California, ready to succeed in college, career, and life.

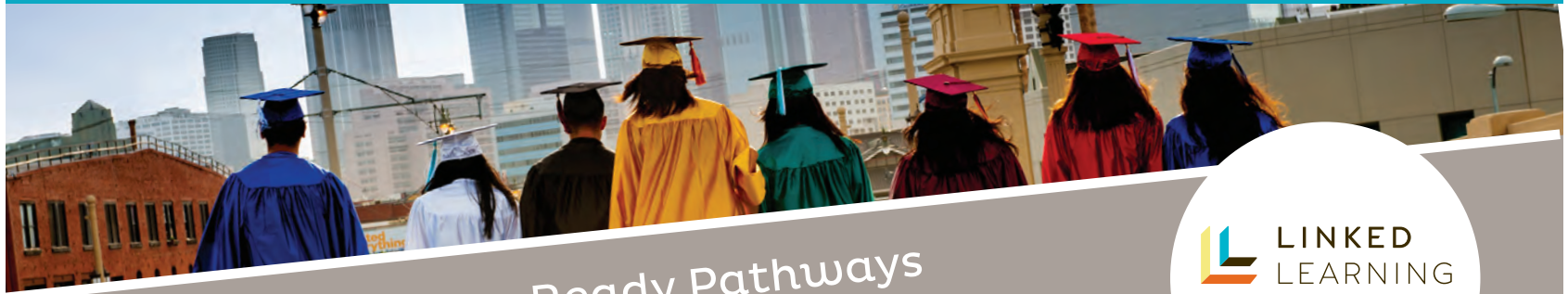
“I love seeing Linked Learning pathway students excitedly working together on one of their projects— researching, creating, proposing, revising, and presenting solutions to real world issues. It is thrilling to hear students talk about working with real professionals or sharing their experiences visiting hospitals, architecture firms, or theatres. It is rewarding to listen to students swell with pride as they tour a college campus because they feel they belong on that campus.”

ESTHER SOLIMAN

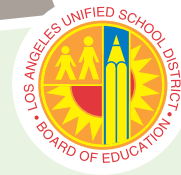
LAUSD Linked Learning Administrator



# LAUSD Linked Learning – About Us



## College & Career-Ready Pathways for Students



In 2009-10, the Los Angeles Unified School District (LAUSD) was one of nine districts in California awarded a grant by the Irvine Foundation to pilot Linked Learning. At that time, LAUSD was organized into eight Local Districts and the grant involved only schools within Local District 4. By the end of the 2011-12 school year there were 11 pathways in such career fields as Science and Technology; Engineering and Design; Arts, Media and Entertainment; and Finance and Business.

In 2011-12, under the direction of Superintendent John Deasy, LAUSD was reorganized and the Chief of Intensive Support and Intervention moved Linked Learning into the Central Office in order to prioritize it as one of the primary high school initiatives across the district. A Linked Learning administrator was appointed, and with her staff has been assigned to lead, oversee, and coordinate all aspects of Linked Learning for LAUSD.

In 2013, an application and selection process was instituted and small learning communities or pilot schools were welcomed to apply to become Linked Learning pathways. As of the 2013-14 school year there were 21 Linked Learning pathways.

In 2012-13, LAUSD submitted an application and was chosen to be one of the California State Linked Learning Districts. ConnectEd, an independent nonprofit organization created by the Irvine Foundation, and the Los Angeles Small Schools Center have provided support in the development of Linked Learning in LAUSD. The Los Angeles Broad-Based Coalition was formed to provide professional expertise and Work-Based Learning support in the pathways. LAUSD is currently working with all stakeholders throughout the district and city to establish a District Student Graduate Profile, a declaration of what every student who graduates from LAUSD should know and be able to do. The Linked Learning office is working with ConnectEd and the pathways in developing a system for authentically assessing students' college and career readiness.

LAUSD is committed to increasing the number of Linked Learning pathways and the quality of those pathways so that all students are college and career-ready.

## LAUSD Linked Learning Mission

The teachers, administrators and staff of the Los Angeles Unified School District (LAUSD) believe in the equal worth and dignity of all students and are committed to educate all students to their maximum potential using the Linked Learning process.

## LAUSD Linked Learning Vision

At Los Angeles Unified School District, our focus is on student learning and achievement. The Linked Learning approach nurtures conditions and environments for students to flourish, create a culture of curiosity, and build a community of life-long learners. Our vision is that every student will receive a quality education in a safe, caring environment, and will be college-prepared and career-ready.

## Contact

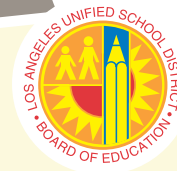
For more information about Linked Learning please call (213) 241-8720 or visit [www.linkedlearning.lausd.net](http://www.linkedlearning.lausd.net)

# A Rigorous Academic Experience



Preparing students for  
College and Career

 **LINKED  
LEARNING**  
*Life comes to school*



In all Linked Learning pathways, teachers engage students in rigorous academic coursework that exceeds the California A-G college preparatory requirements. Further, Linked Learning pathways prepare students with 21st Century Skills to successfully meet the Common Core State Standards. Like Linked Learning, the new standards represent a shift from memorizing facts and figures to challenging students to develop a deeper understanding of subject matter, think critically, and apply learning in varying contexts.

Additionally, academic teachers work collaboratively with career technical instructors to prepare students for success in postsecondary education and career development through real-world applications, project-based lessons, and other experiences that extend beyond the classroom. In Linked Learning pathways, academic courses are linked to and reinforce career technical content while career technical courses enhance and support academic coursework.

For example, a science teacher may teach concepts that are reinforced and brought to life in a career-based medical course via hands-on practical experiences. Students appreciate and gain a greater depth of knowledge about the subject through the connection between theory and application.

“Being able to use the skills and lessons taught in the classroom in a real-world situation motivates me and inspires me to keep moving forward to pursue a career in film.”

## LINKED LEARNING IS A-G AND MORE...

### California State University - University of California Requirements:

**ENGLISH > Four Years**

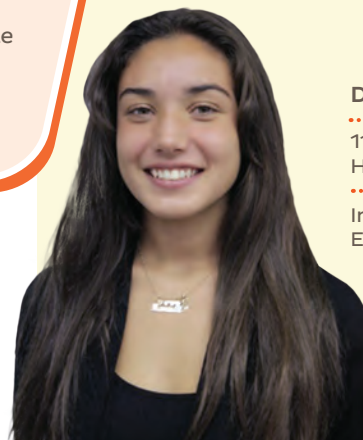
**MATHEMATICS > Three Years**  
Including Algebra I, Geometry & Algebra II

**LABORATORY SCIENCE > Two Years**

**SOCIAL STUDIES > Three Years**

**WORLD LANGUAGE > Two Years**

**VISUAL & PERFORMING ARTS > One Year**



#### DANIELLE GALLOWAY

11th Grade, Hollywood  
High School, New Media Pathway

Interned at the Southeast  
European Film Festival

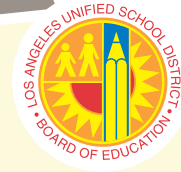


# A Challenging Career Technical Component



Learning Made Real  
and Exciting

 **LINKED  
LEARNING**  
*Life comes to school*

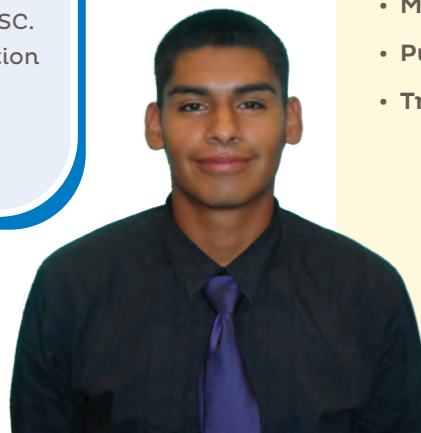


Linked Learning pathways expose students to California's major industries, giving them a better understanding of the types of career paths and jobs available, while helping them develop the skills and knowledge they will need to succeed in postsecondary education and career development.

Students are prepared for high-skilled, high-wage employment through a multiyear sequence of technical courses within a specific industry sector that complement and enhance their academic learning. Real-world experiences, project-based lessons, and performance assessments bring academic and technical learning to life. More importantly, after a Linked Learning educational experience, students gain the ability to seize opportunities that come their way.

Linked Learning makes learning real and exciting for thousands of students who seek more than a traditional school setting. Whether aspiring to become doctors, engineers, architects, or artists, in choosing a Linked Learning pathway, all students have the opportunity to learn what they love and connect their coursework with their interests and aspirations. Linked Learning is their pathway to success.

"This summer I had the privilege of giving a speech about my experience with the Junior Achievement program to the MBA business graduates at USC. What I learned changed my perception of education. Now I want to strive for more, and possibly pursue my education at USC."



## California's 15 Industry Sectors are:

- Agriculture and Natural Resources
- Arts, Media and Entertainment
- Building Trades and Construction
- Education, Child Development and Family Services
- Energy and Utilities
- Engineering and Design
- Fashion and Interior Design
- Finance and Business
- Health Science and Medical Technology
- Hospitality, Tourism and Recreation
- Information Technology
- Manufacturing and Product Development
- Marketing, Sales and Service
- Public Services
- Transportation

**EMMANUEL D. BARRAGAN**

.....  
12th Grade,  
Miguel Contreras Learning Complex,  
School of Business & Tourism

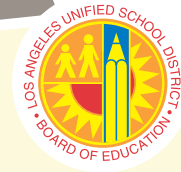


# A Work-Based Learning Experience



Bringing Theories to Life Through Real-World Practical Experiences

 **LINKED  
LEARNING**  
*Life comes to school*



Linked Learning provides a full range of career-based activities for students that begin as early as the middle school years and increase over time. The sequence of experiences varies in purpose and level of intensity. During the early years, the Linked Learning experience begins with guest speakers, educational tours, and activities aimed at fostering career exposure and exploration. This initial phase is designed to teach students about the various fields available for postsecondary study and career development. In subsequent years, students are engaged in job shadowing, workplace tours, and mentorship programs, which provide opportunities for more in-depth engagement in activities that have an impact beyond the classroom and create a platform for multiple options after high school. Culminating experiences include internships, service learning, apprenticeships, and professional training programs intended to prepare students for successful entry into the workplace and postsecondary education.

“My field trip to Verizon Wireless network headquarters was an experience I will never forget. I had an interesting talk with an electrical engineer about his work on establishing a network, how the process works, and the importance of teamwork.”

**RAPHAEL CALALO**

10th Grade, STEM Academy,  
Engineering Pathway



## Work-Based Learning Spectrum:

### CAREER AWARENESS

Learning **ABOUT** work.

**BUILD** awareness of the variety of careers available and the role of postsecondary education; broaden student options.

### CAREER EXPLORATION

Learning **ABOUT** work.

**EXPLORE** career options and postsecondary options to motivate students and to assist them in making high school to postsecondary decisions.

### CAREER PREPARATION

Learning **THROUGH** work.

**APPLY** learning through practical experience that develops knowledge and skills necessary for success in careers and postsecondary education.

### CAREER TRAINING

Learning **FOR** work.

**TRAIN** for employment and/or postsecondary education in a specific range of occupations.



Rigorous  
Academic  
Experience

Real-World  
Technical  
Skills

**LINKED  
LEARNING**  
*Life comes to school*



Work-Based  
Learning

Strong  
Support  
Services

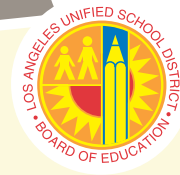


# Strong Support Services



Helping Students Master Challenging Academic and Technical Learning

**LINKED LEARNING**  
*Life comes to school*



Linked Learning Support Services include academic, social-emotional counseling, tutoring, parent engagement, mentoring, career assessment and exploration, and bridge programs to postsecondary education. These services are fundamental to the pathway experience and critical for ensuring students succeed in their challenging academic and technical coursework. Students are supported in setting and achieving goals and mapping a successful path to college and career success. More importantly, these services support the development of productive dispositions and behaviors that students will need to succeed in postsecondary education, careers, and civic life.

Rigorous Academic Experience

Real-World Technical Skills

Work-Based Learning

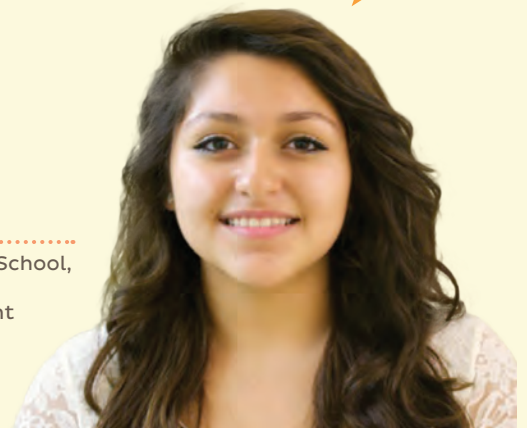
Strong Support Services



"My experience in Summer Bridge was more than what I expected. It was simply amazing. In those few weeks I learned to be confident, learned how to work independently and in groups, and learned about the opportunities that I have in life."

**EMELY DOMINGUEZ**

9th Grade, Belmont High School,  
Multimedia Pathway,  
Summer Bridge Participant





Real-World  
Technical  
Skills

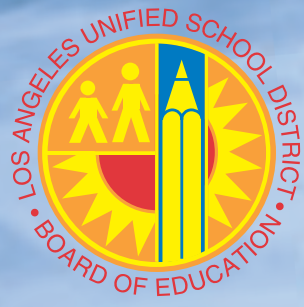
Rigorous  
Academic  
Experience

**LINKED  
LEARNING**  
*Life comes to school*



Strong  
Support  
Services

Work-Based  
Learning



LOS ANGELES  
UNIFIED SCHOOL DISTRICT

Linked Learning, 11th Floor  
333 S. Beaudry Avenue  
Los Angeles, CA 90017  
Tel. (213) 241-8720

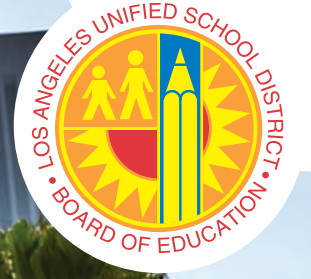
[www.linkedlearning.lausd.net](http://www.linkedlearning.lausd.net)



Produced by:  
**MEDIA IMAGE**  
PUBLIC RELATIONS  
PR WITH A PUBLIC POLICY PERSPECTIVE  
[WWW.MEDIAIMAGEPR.COM](http://WWW.MEDIAIMAGEPR.COM)

# LAUSD LINKED LEARNING A BRIDGE TO COLLEGE AND CAREER SUCCESS

**LINKED LEARNING**  
*Life comes to school*




Linked Learning is Comprised of Four Components:



## LAUSD LINKED LEARNING College and Career-Ready Pathways

Linked Learning prepares students for college and career success by providing a transformative high school experience where students are engaged through linked college-prep academic classes, high-quality technical education classes, and real-world experiences that prepare them for college and career success. In classes and internships, students work with professionals in their career pathways. Students are active learners, working collaboratively on projects developed from the interfacing of their academic and career pathway standards, to solve problems and present solutions.



**A TRANSFORMATIVE  
ACADEMIC EXPERIENCE**  
Bringing Theories to Life Through  
Real-World Practical Experiences

