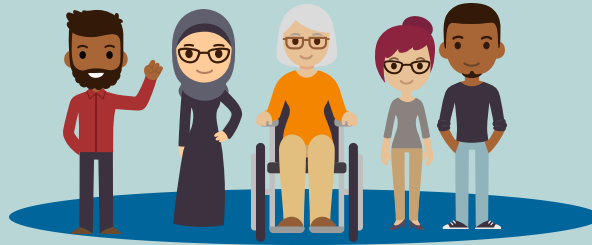


2021-2022

# TK-12 Dual Language Education Micro-Credentialing Program



## *Cultivating Leaders in Dual Language Education and Champions for Multilingualism and Multiculturalism*



### The Dual Language Education (DLE) Micro-Credential at a Glance:

- Three-salary point class consisting of three courses completed over the span of the academic year
- Course content delivered via instruction-led, face-to-face and high quality eLearning content
- In Communities of Practice, teachers produce Evidence of Learning Artifacts (EOLAs)

**Synchronous Learning Dates**

- August 28, 2021
- October 16, 2021
- December 11, 2021
- February 26, 2022
- April 23, 2022

### DLE Micro-Credential participants will be able to:

- Deeply understand the California Content Standards, the Guiding Principles for DLE, and other foundational documents and current relevant research and their implications on teaching and learning in a 21<sup>st</sup> century DLE classroom
- Design and deliver authentic assessments that measure performance and proficiency across disciplines to inform instructional decision making
- Leverage instructional technology to plan units and lessons that integrate content and language in an assets-based, learner-centered classroom

### Application Information:

For more information about the DLE micro-credentialing program and to apply, please visit the L.A. Unified Micro-Credentialing Program Website:  
<https://bit.ly/LAUnifiedMicrocredentialingPrograms>

- June 21, 2021: Applications Open: <http://bit.ly/21-22-dle-micro-info-application>
- August 20, 2021: Application Window Closes
- August 23, 2021: Acceptance Notifications Sent
- August 28, 2021: Program Begins

For more information, contact Kennis Wong Chan, DLE Specialist at [kennis.wong@lausd.net](mailto:kennis.wong@lausd.net)



[mmed.lausd.net](http://mmed.lausd.net)  
 Approved by: Lydia Acosta Stephens  
 Executive Director