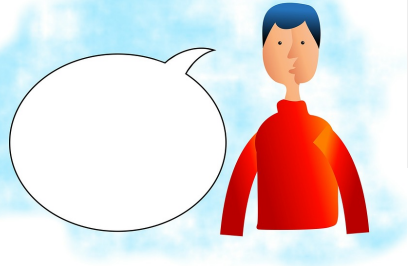


Dyslexia is a language-based disability.

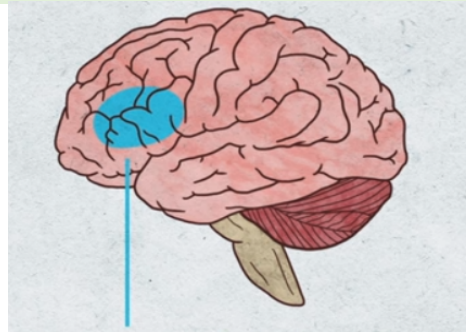
Difficulty in phonological awareness is a key predictor of dyslexia.

What we know...



/b/ ð /d/
dog

Brains of those with dyslexia rely more on the right side of the brain and the frontal lobe. This is a neurobiological difference.



Students respond to **STRUCTURED LITERACY INSTRUCTION** which is direct, explicit, structured, sequential and multi-sensory.”



Those with dyslexia can physically change their brain and improve their reading.