

# LOS ANGELES UNIFIED SCHOOL DISTRICT BIRTH TO EIGHT

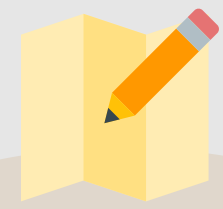
## ROADMAP TO SUCCESS



Resolution



Stakeholder Meetings



Birth to Eight Roadmap

## PUTTING THE DISTRICT'S YOUNGEST LEARNERS ON A HIGHWAY TO SUCCESS

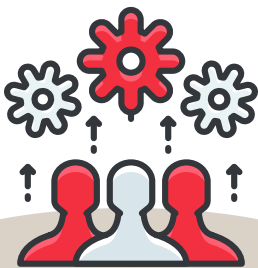
### The Birth to Eight Roadmap for Success in

**Los Angeles** is a plan for the District's youngest children to be socially, emotionally and academically successful. This plan:

- Provides access to high-quality care and education starting at birth and continuing through second grade
- Eliminates achievement gaps before third grade



## COLLABORATIVELY WRITTEN BY OVER 30 STAKEHOLDER GROUPS



**Community-based organizations came together with District divisions and departments** to share their areas of expertise and provide recommendations from outside the District.

**Collaborative effort:** Over 50 people from 30 different agencies, labor partners, and divisions met bi-monthly for five months to create a unique plan for L.A. Unified.

# STEERING COMMITTEE RECOMMENDATIONS - 5 KEY AREAS

## The Roadmap builds on the District's goal of 100%

**graduation.** The Steering Committee thoughtfully considered current district policies, budget impacts, and additional workloads. The five recommendations were created with an emphasis on:

- Instructional Growth and Professional Development
- Family Engagement
- Developing the Whole Child
- Data Integration and Alignment
- Public and Private Partnerships



## THREE-YEAR IMPLEMENTATION TIMELINE AND ACTION PLANS



**The L.A. Unified Birth to Eight Roadmap for Success** establishes timelines to monitor implementation of the plan. We will measure outcomes and evaluate actions taken over a three-year period.

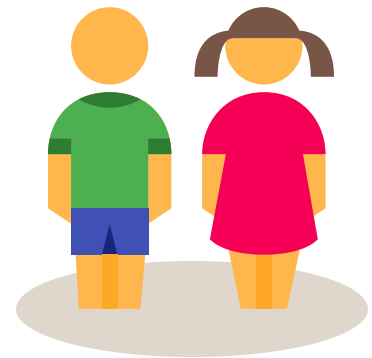
**High-quality early education experiences** result in:

- Reading at grade level by third grade
- Better high school graduation rates
- Reduction of the risks associated with criminal involvement

## LEVERAGES EXISTING ASSETS FROM THE DISTRICT, CITY AND STATE

**The L.A. Unified Birth to Eight Roadmap for Success** leverages existing district and city assets to ensure that all students are successful. These assets include:

- Collective Impact Groups
- The Primary Promise
- California English Learner Roadmap
- The Early Language and Literacy Plan
- The 2018 District Master Plan for English Learners and Standard English Learners



For more information on the Birth to Eight Roadmap for Success in the Los Angeles Unified School District, please contact the Early Childhood Education Division at 213-241-0415.



**ECED**



Division of Instruction  
Los Angeles Unified School District